

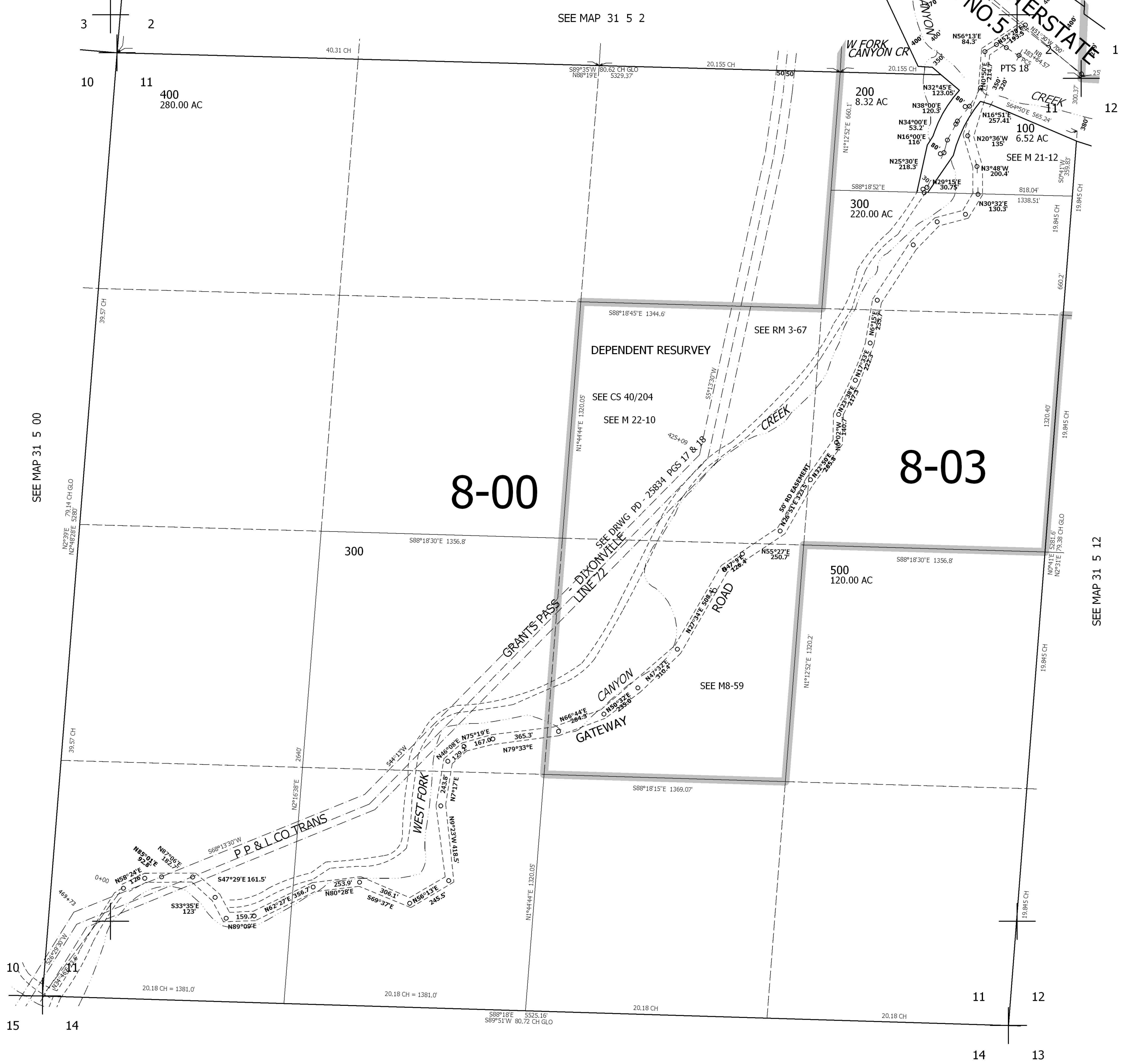
THIS MAP WAS PREPARED FOR ASSESSMENT PURPOSE ONLY.

SEC.11 T31S. R.5W. W.M. DOUGLAS COUNTY

REVISED ON 10-2-01

1" = 400'

SEE MAP 31 5 2



CANCELLED

SEE MAP 31 5 00

SEE MAP 31 5 12

SEE MAP 31 5 00

456,000

4,185,000