

THIS MAP WAS PREPARED FOR ASSESSMENT PURPOSE ONLY.

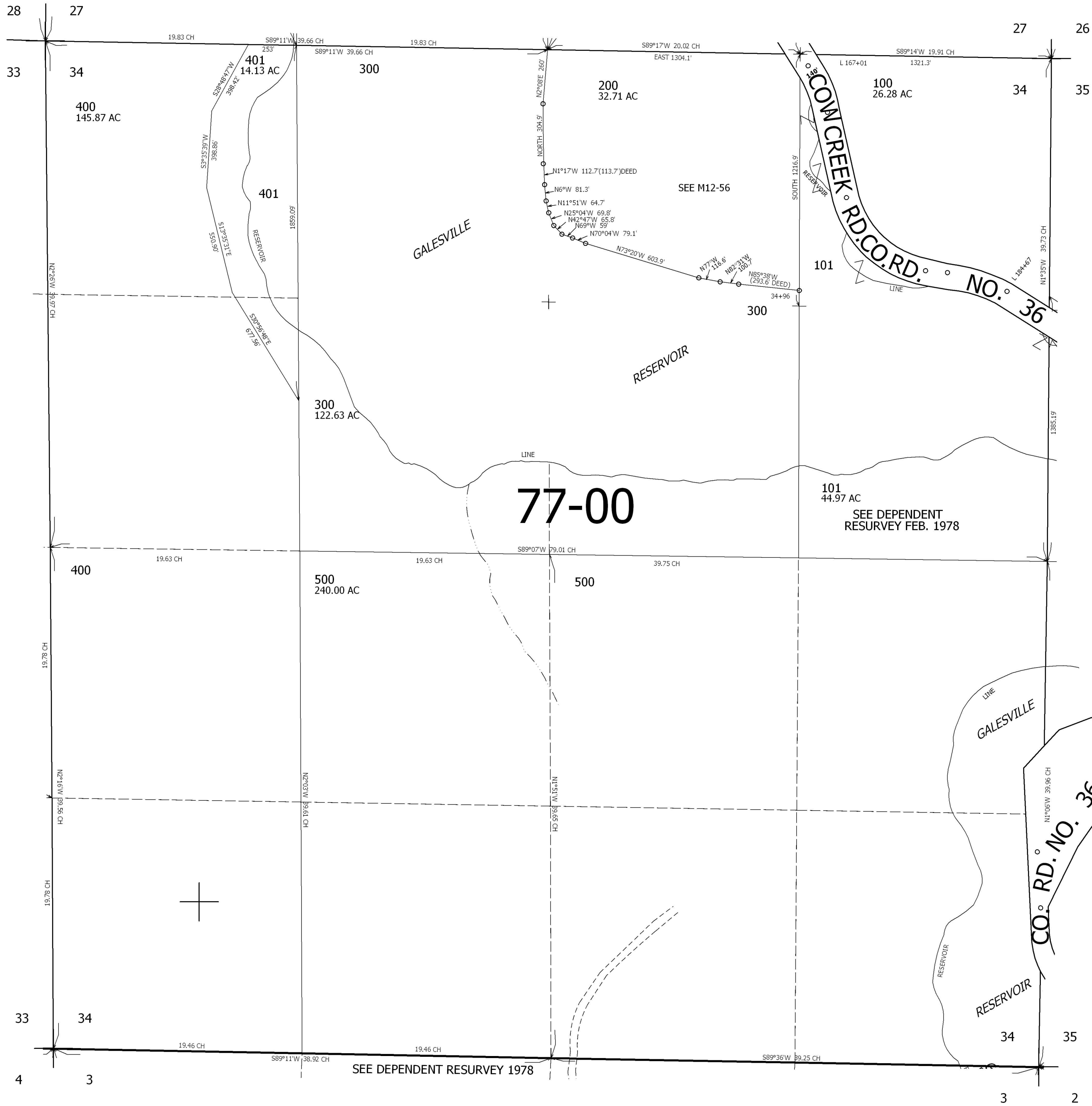
# SEC.34 T31S. R.4W. W.M. DOUGLAS COUNTY

REVISED ON 4-1-98

31 4 34

1" = 400'

SEE MAP 31 4 27



CANCELLED

SEE MAP 31 4 35

435,000

SEE MAP 31 4 33

SEE DEPENDENT RESURVEY 1978

SEE MAP 32 4 3

4,211,000

31 4 34