

THIS MAP WAS PREPARED FOR ASSESSMENT PURPOSE ONLY.

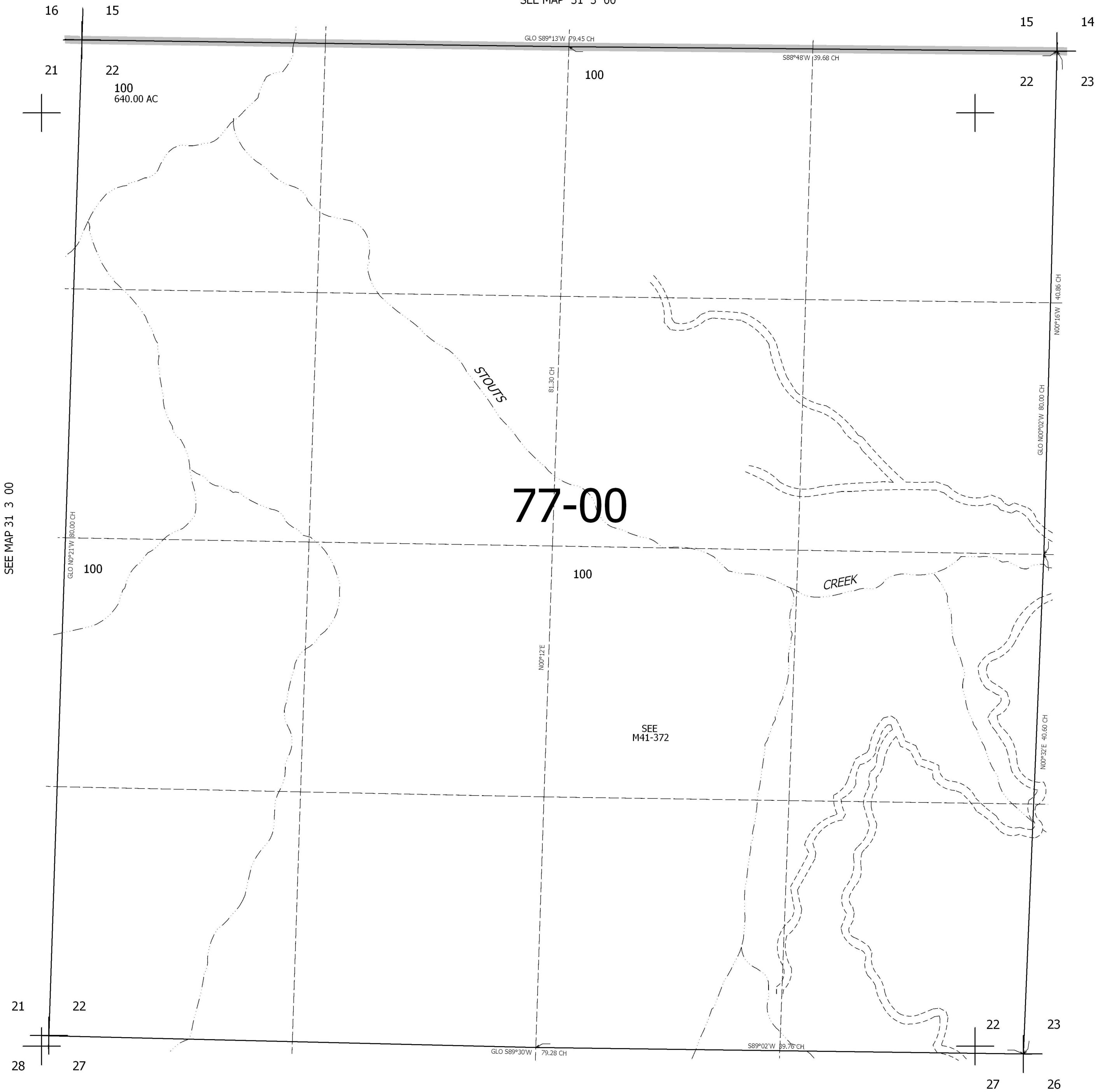
SEC.22 T31S. R.3W. W.M.  
DOUGLAS COUNTY

REVISED ON

31 3 22

1" = 400'

SEE MAP 31 3 00



CANCELLED  
100M1

SEE MAP 31 3 00

SEE MAP 31 3 23

SEE  
M41-372

444,000

SEE MAP 31 3 00

4,242,000

31 3 22