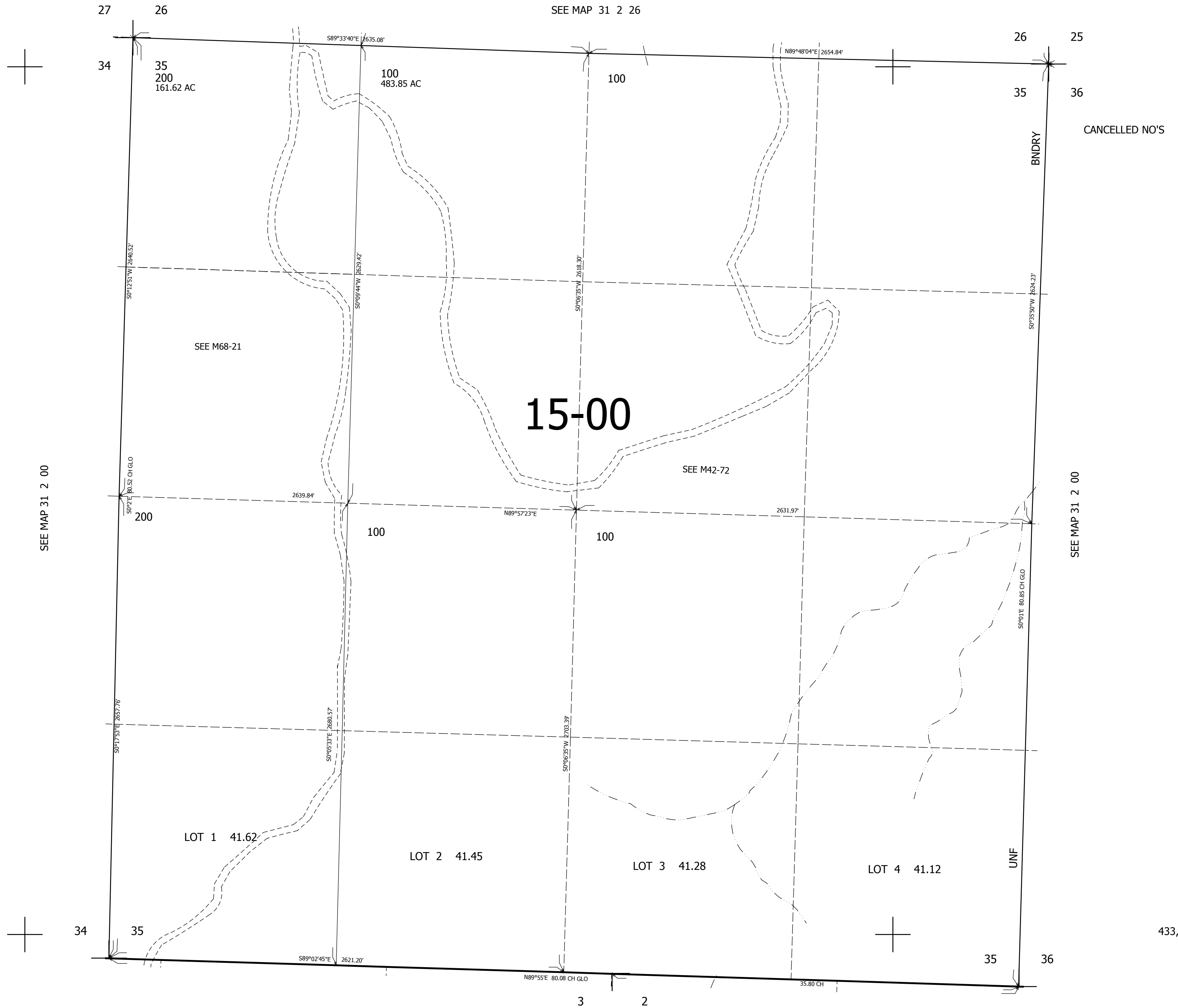


THIS MAP WAS PREPARED FOR ASSESSMENT PURPOSE ONLY.

SEC.35 T31S. R.2W. W.M.
DOUGLAS COUNTY
1" = 400'

REVISED ON

31 2 35



CANCELLED NO'S

433,000

SEE MAP 32 2 00

4,276,000

31 2 35