

THIS MAP WAS PREPARED FOR ASSESSMENT PURPOSE ONLY.

SEC.26 T31S. R.2W. W.M. DOUGLAS COUNTY

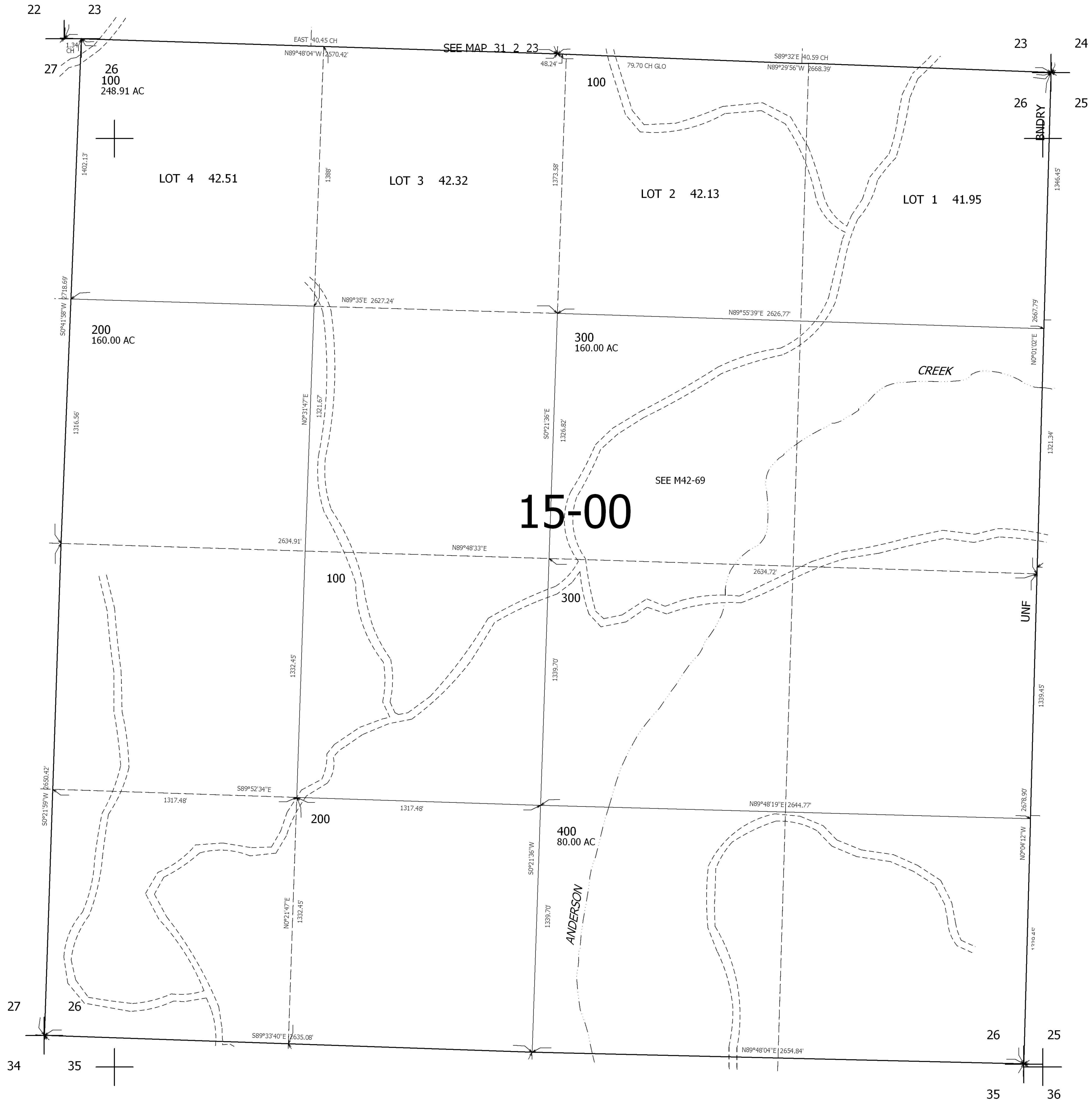
REVISED ON

31 2 26

1" = 400'

SEE MAP 31 2 00

SEE MAP 31 2 25



CANCELLED

4,277,000

438,000

SEE MAP 31 2 35

31 2 26