

THIS MAP WAS PREPARED FOR ASSESSMENT PURPOSE ONLY.

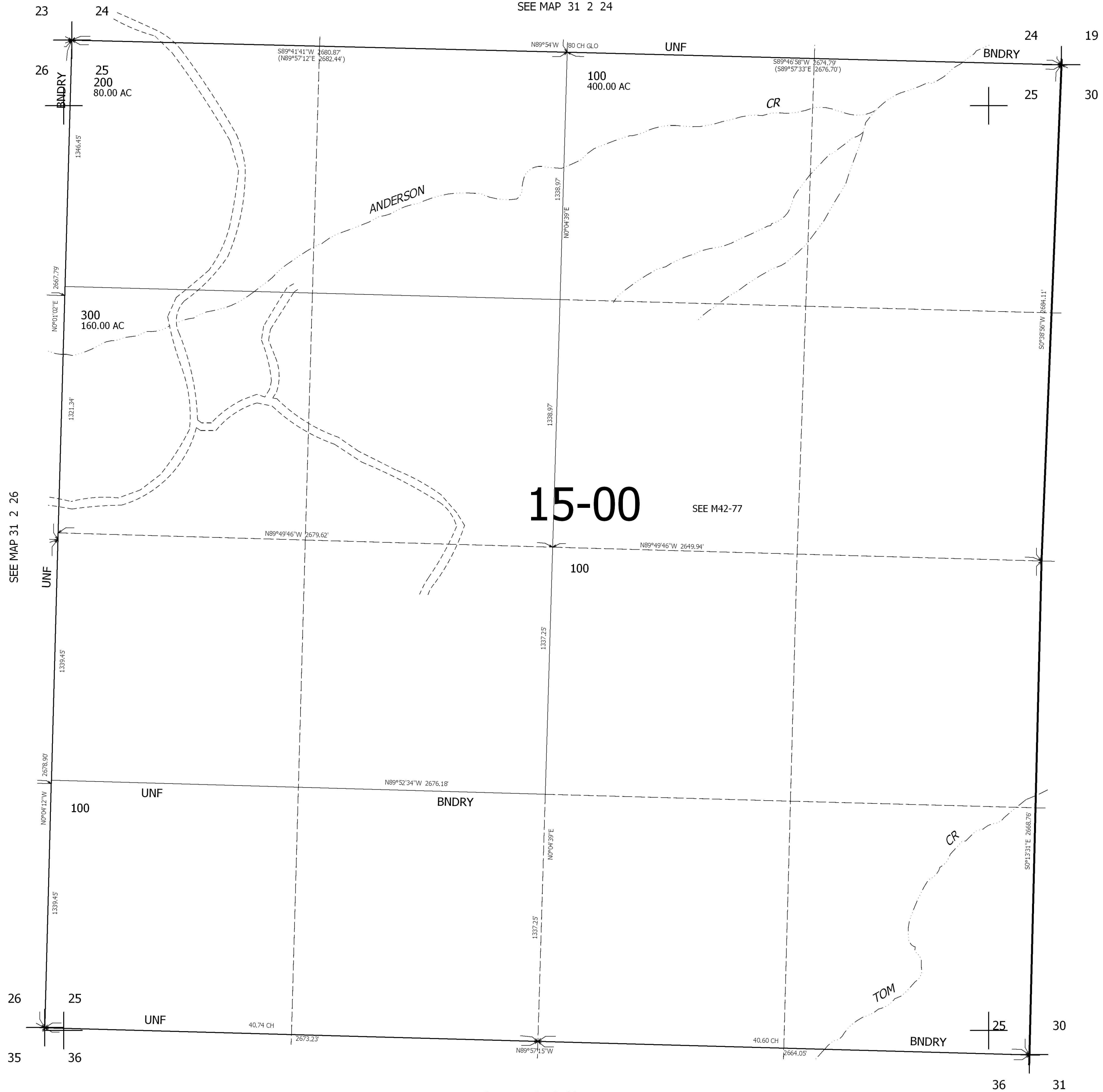
SEC.25 T31S. R.2W. W.M. DOUGLAS COUNTY

REVISED ON

31 2 25

1" = 400'

SEE MAP 31 2 24



CANCELLED

SEE MAP 31 1 30

438,000

SEE MAP 31 2 00

4,282,000

31 2 25