

THIS MAP WAS PREPARED FOR ASSESSMENT PURPOSE ONLY.

SEC.24 T31S. R.2W. W.M. DOUGLAS COUNTY

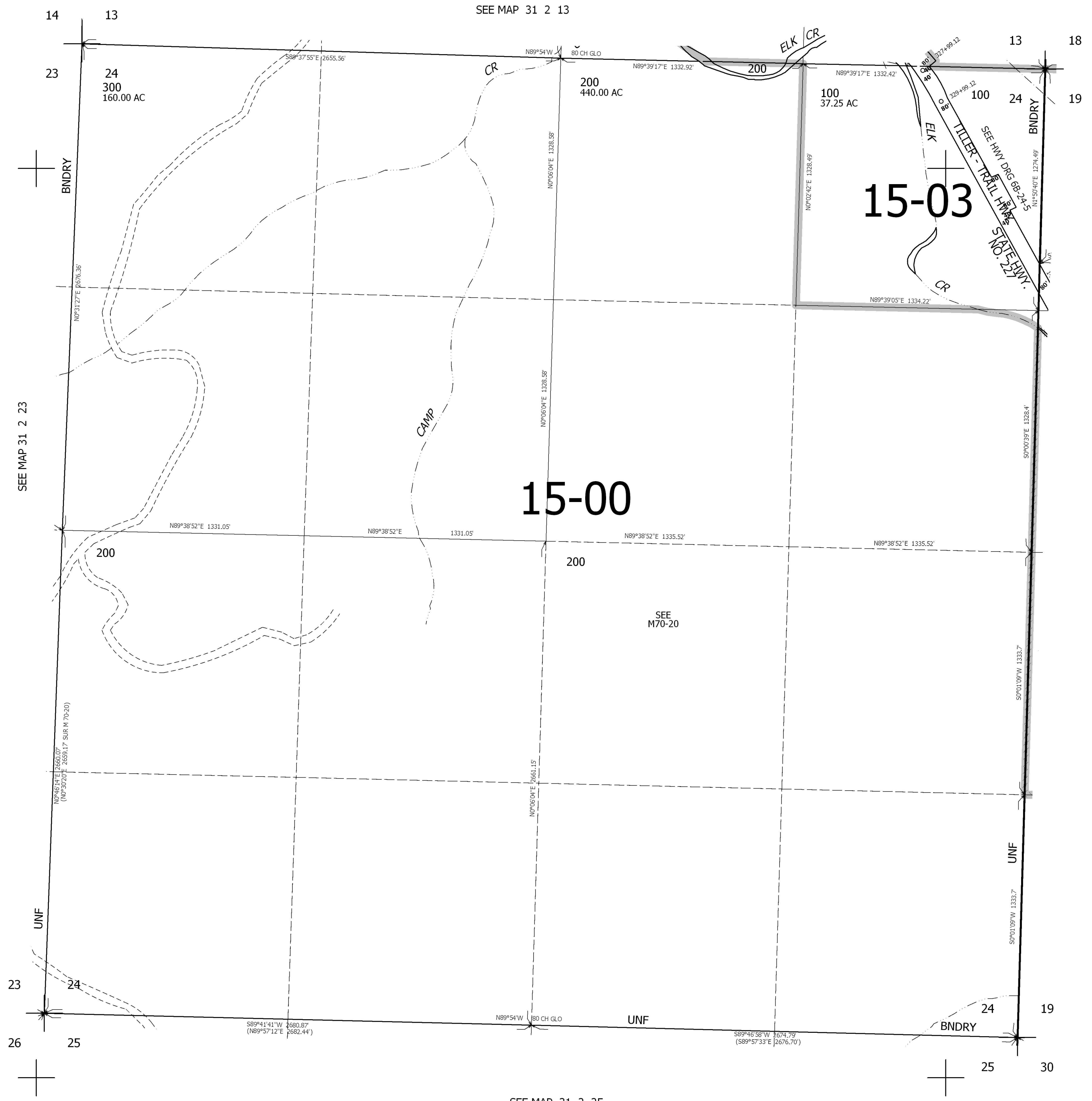
REVISED ON

31 2 24

1" = 400'

SEE MAP 31 2 13

CANCELLED



SEE MAP 31 2 23

SEE MAP 31 1 19

SEE MAP 31 1 19BC

SEE MAP 31 1 19

15-00

15-03

SEE M70-20

443,000

SEE MAP 31 2 25

31 2 24

4,282,000