

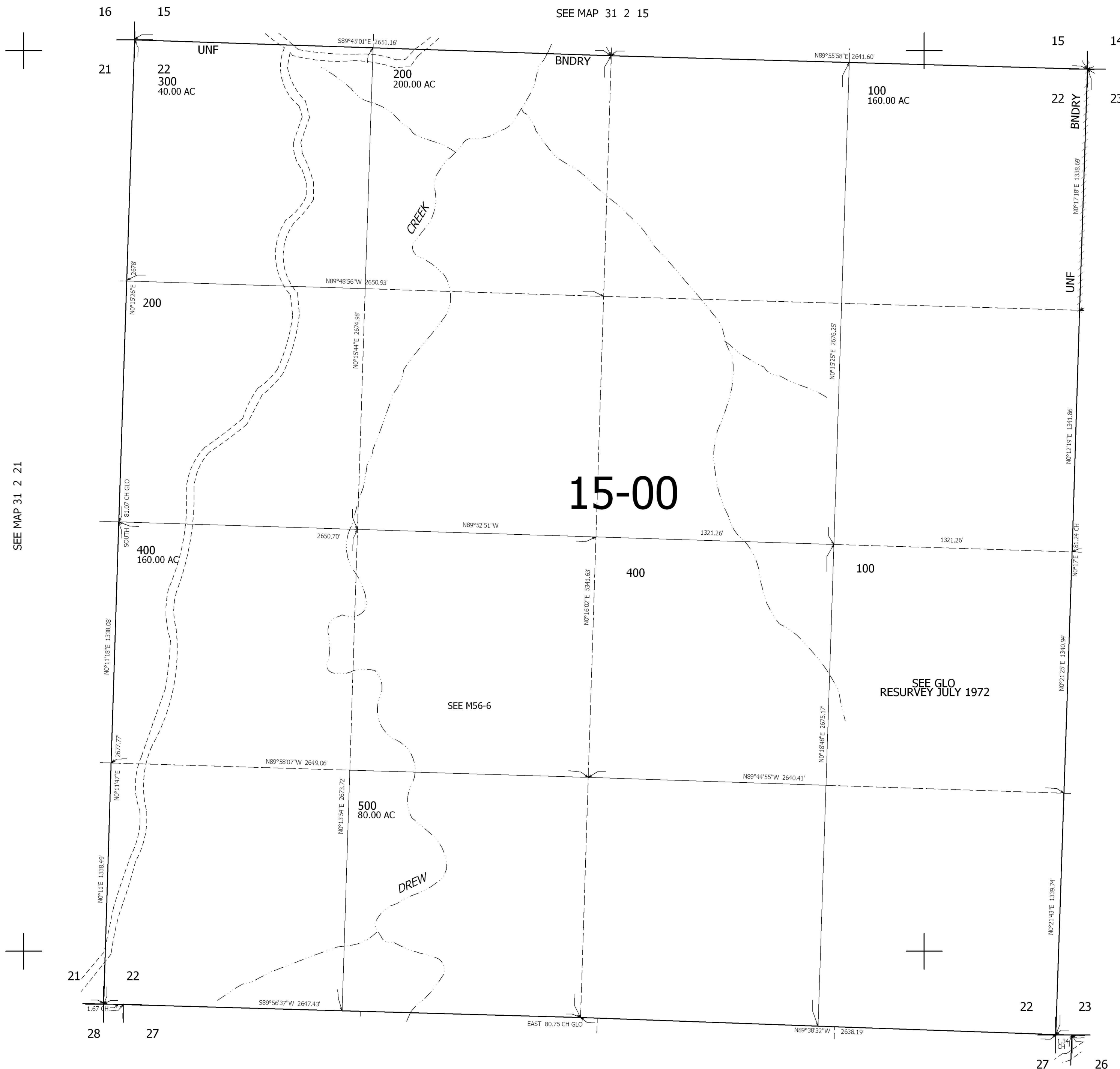
THIS MAP WAS PREPARED FOR ASSESSMENT PURPOSE ONLY.

SEC.22 T31S. R.2W. W.M. DOUGLAS COUNTY

REVISED ON

31 2 22

1" = 400'



CANCELLED 400M1

SEE MAP 31 2 23

444,000

SEE MAP 31 2 00

4,271,000

31 2 22