

THIS MAP WAS PREPARED FOR ASSESSMENT PURPOSE ONLY.

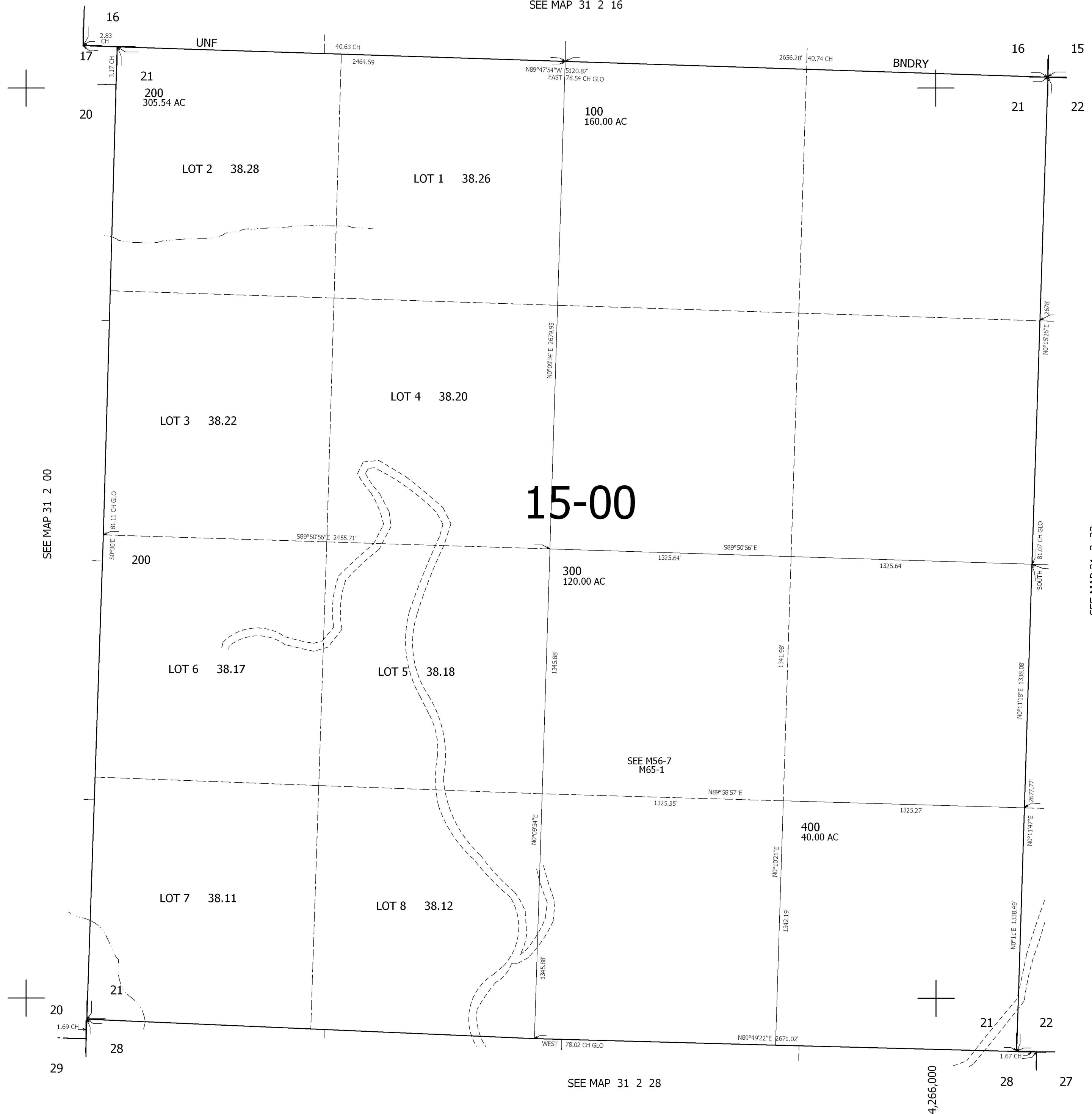
SEC.21 T31S. R.2W. W.M. DOUGLAS COUNTY

REVISED ON

31 2 21

1" = 400'

SEE MAP 31 2 16



CANCELLED

SEE MAP 31 2 00

SEE MAP 31 2 22

15-00

SEE M56-7
M65-1

444,000

SEE MAP 31 2 28

4,266,000

31 2 21