

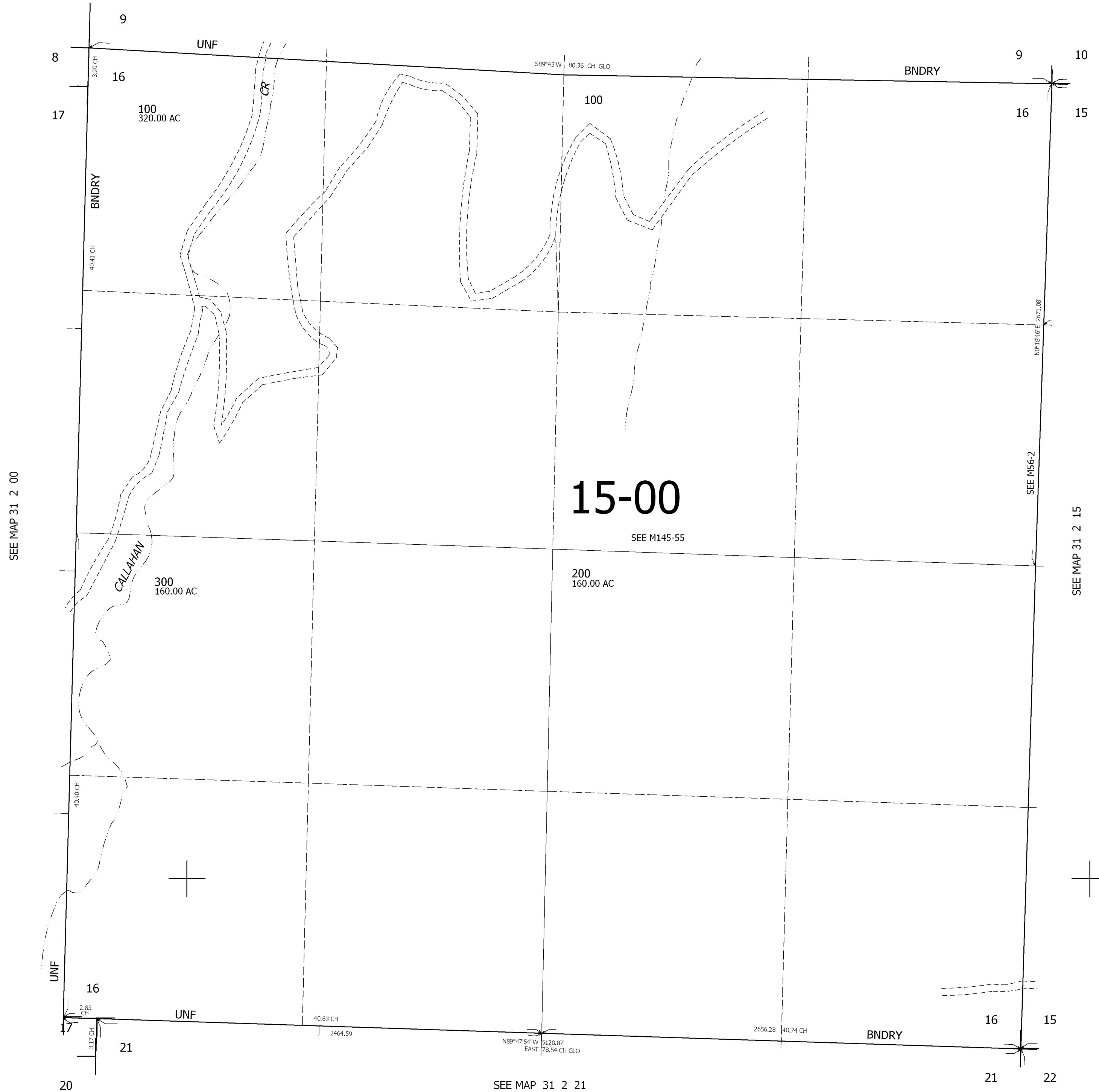
THIS MAP WAS PREPARED FOR ASSESSMENT PURPOSE ONLY.

SEC.16 T31S. R.2W. W.M. DOUGLAS COUNTY

REVISED ON

31 2 16

1" = 400'
SEE MAP 31 2 9



CANCELLED
300M1

450,000

SEE MAP 31 2 21

4,267,000
31 2 16