

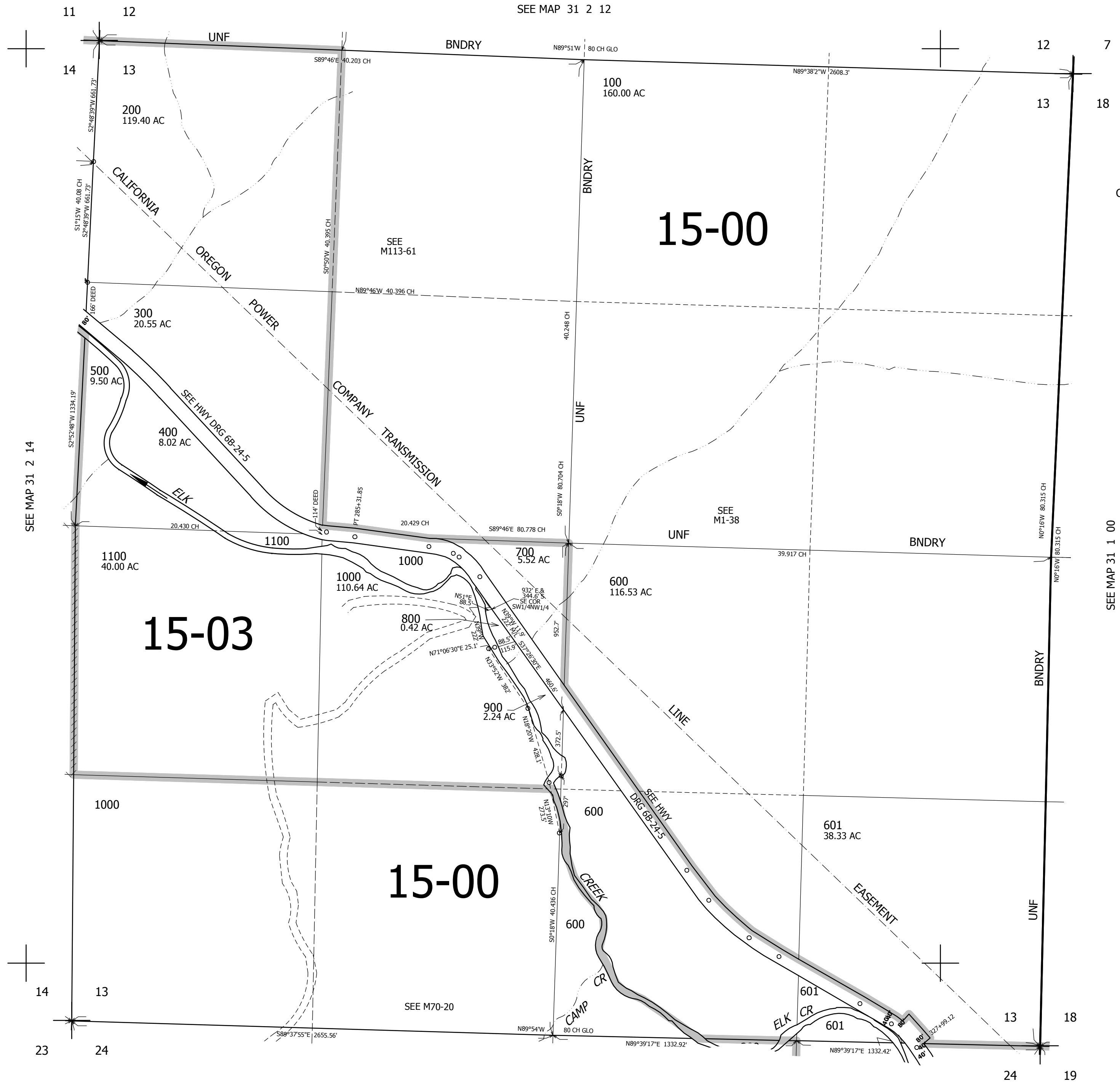
THIS MAP WAS PREPARED FOR ASSESSMENT PURPOSE ONLY.

SEC.13 T31S. R.2W. W.M. DOUGLAS COUNTY

REVISED ON 1-14-02

31 2 13

1" = 400'



CANCELLED

SEE MAP 31 1 00

449,000

4,282,000

31 2 13

SEE MAP 31 2 14

SEE MAP 31 2 12

SEE MAP 31 2 24

15-00

15-03

15-00