

THIS MAP WAS PREPARED FOR ASSESSMENT PURPOSE ONLY.

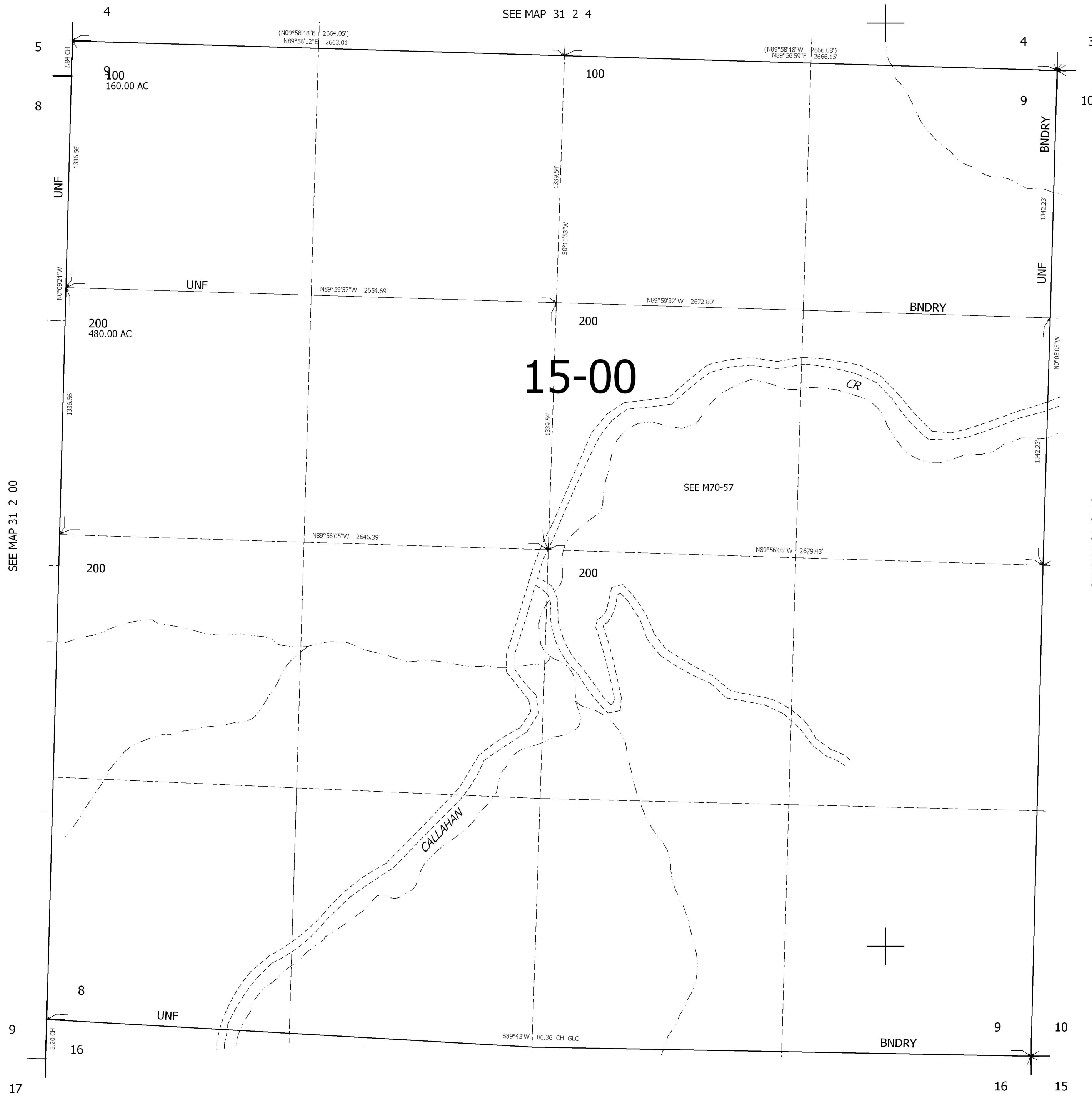
SEC.9 T31S. R.2W. W.M. DOUGLAS COUNTY

REVISED ON

31 2 9

1" = 400'

SEE MAP 31 2 4



CANCELLED

SEE MAP 31 2 00

SEE MAP 31 2 10

SEE MAP 31 2 16

455,000

4,266,000

31 2 9