

THIS MAP WAS PREPARED FOR ASSESSMENT PURPOSE ONLY.

T31S. R.2W. W.M.  
DOUGLAS COUNTY

REVISED ON

31 2 00  
& INDEX

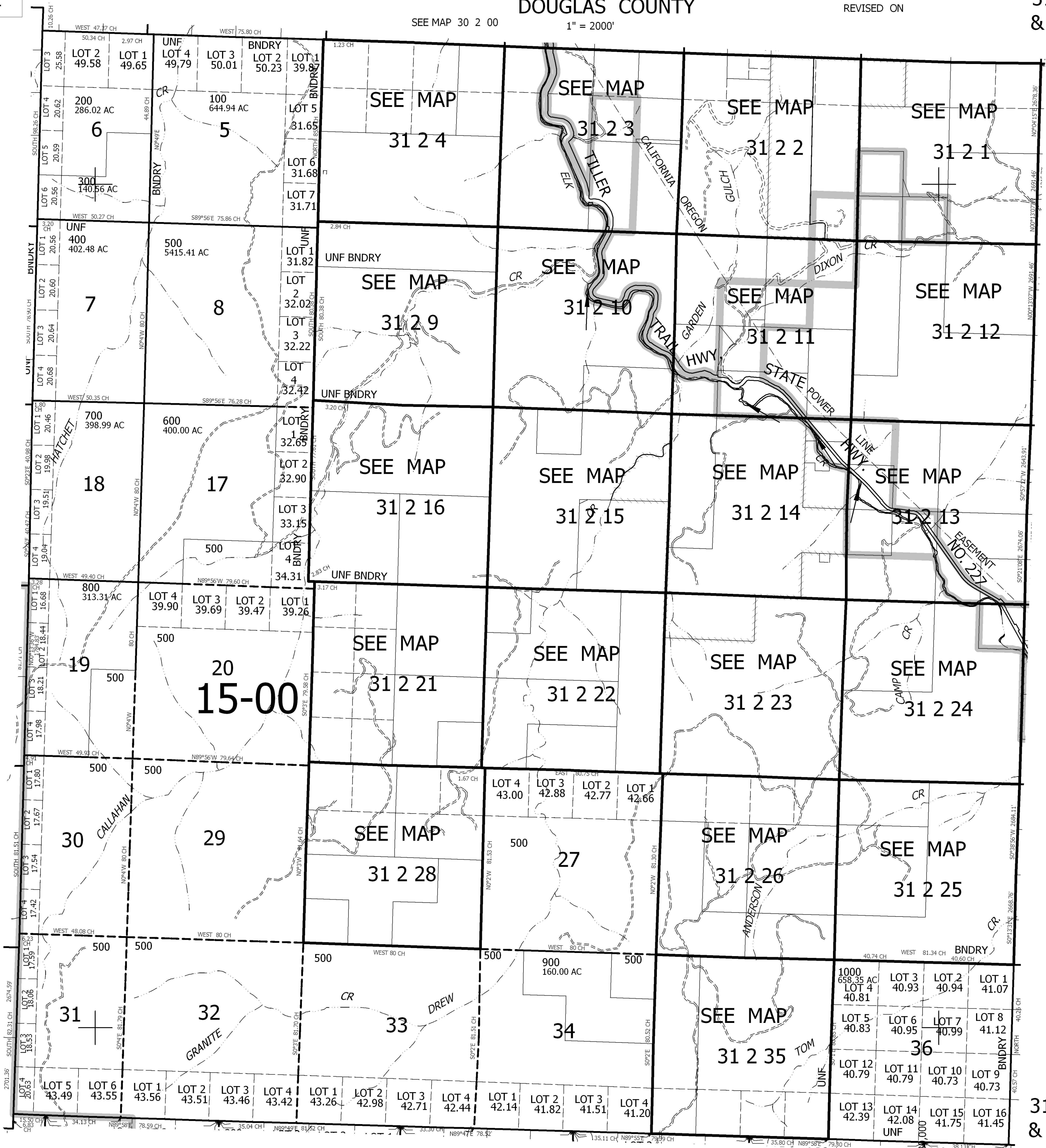
SEE MAP 30 2 00

1" = 2000'

CANCELLED

SEE MAP 31 3 00

SEE MAP 31 1 00



SEE MAP 32 2 00

436,000

31 2 00  
& INDEX