

THIS MAP WAS PREPARED FOR ASSESSMENT PURPOSE ONLY.

SEC.32 T31S. R.1W. W.M. DOUGLAS COUNTY

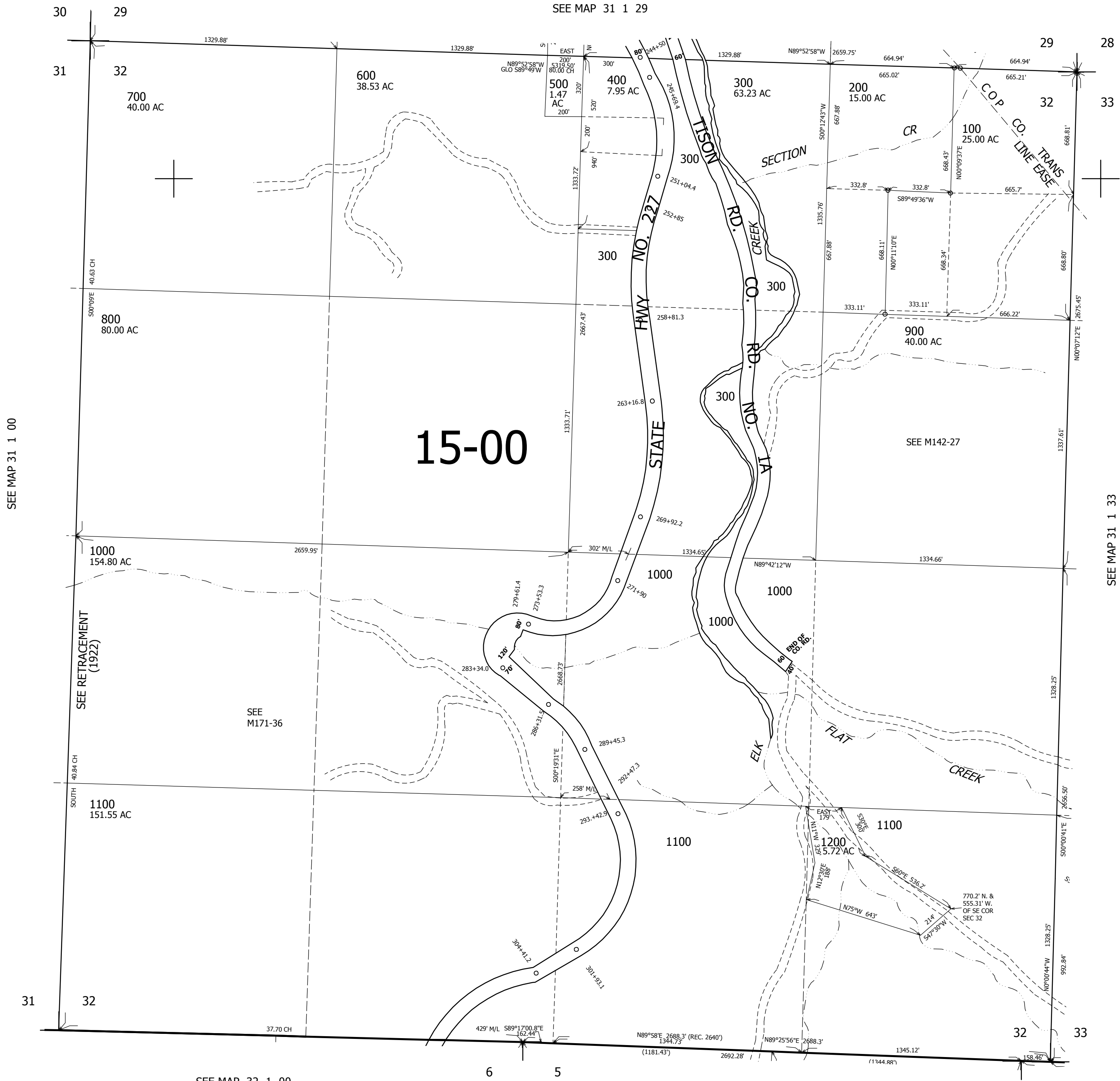
REVISED ON

31 1 32

1" = 400'

SEE MAP 31 1 29

CANCELLED



SEE MAP 31 1 00

SEE MAP 31 1 33

31

SEE MAP 32 1 00

SEE MAP 32 1 15

432,000

31 1 32

4,293,000