

THIS MAP WAS PREPARED FOR ASSESSMENT PURPOSE ONLY.

SW1/4 NW1/4 SEC.19 T31S. R.1W. W.M. DOUGLAS COUNTY

REVISED ON
5-9-94

31 1 19BC

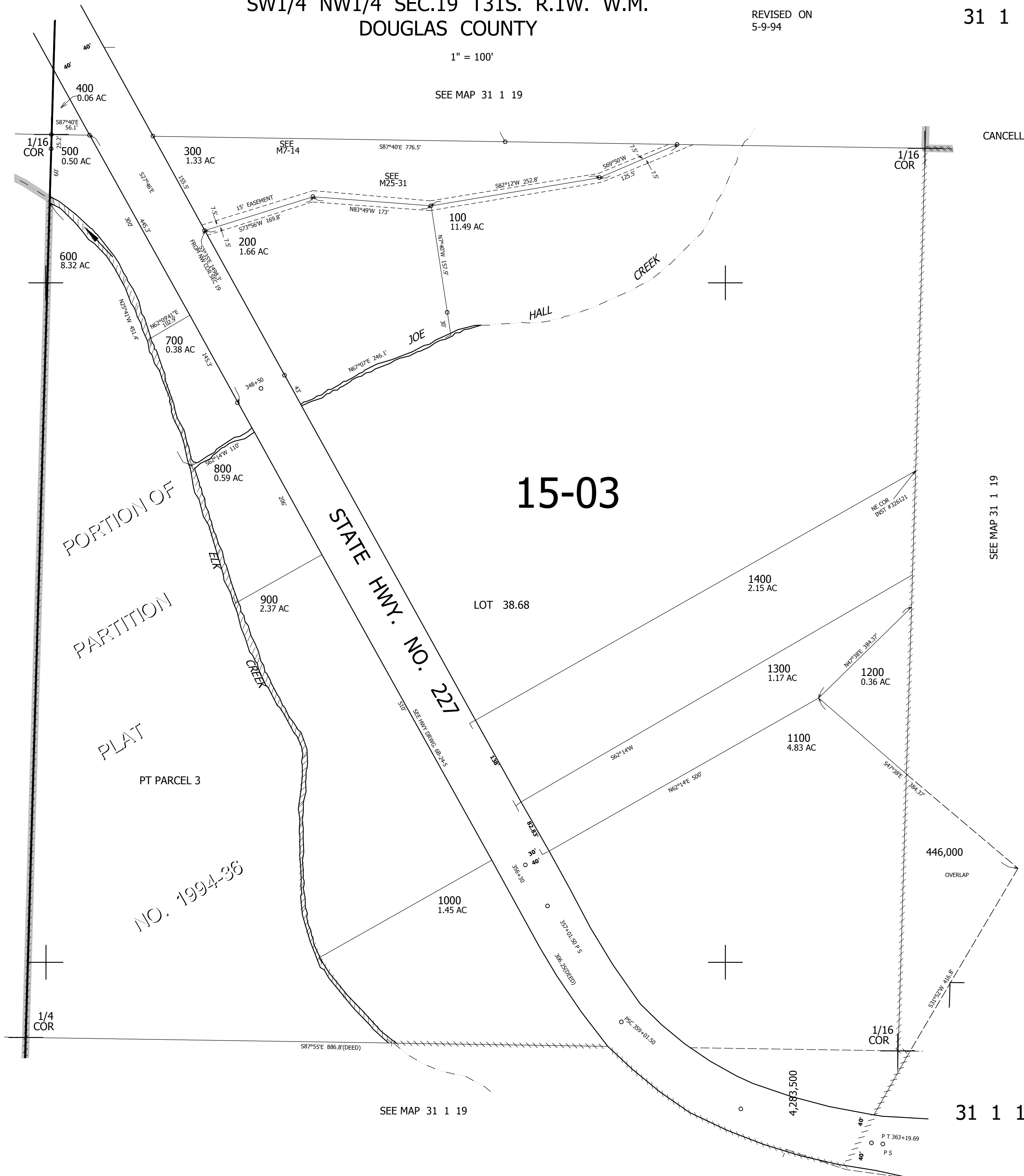
1" = 100'

SEE MAP 31 1 19

CANCELLED

SEE MAP 31 2 24

SEE MAP 31 1 19



15-03

SEE MAP 31 1 19

31 1 19BC