

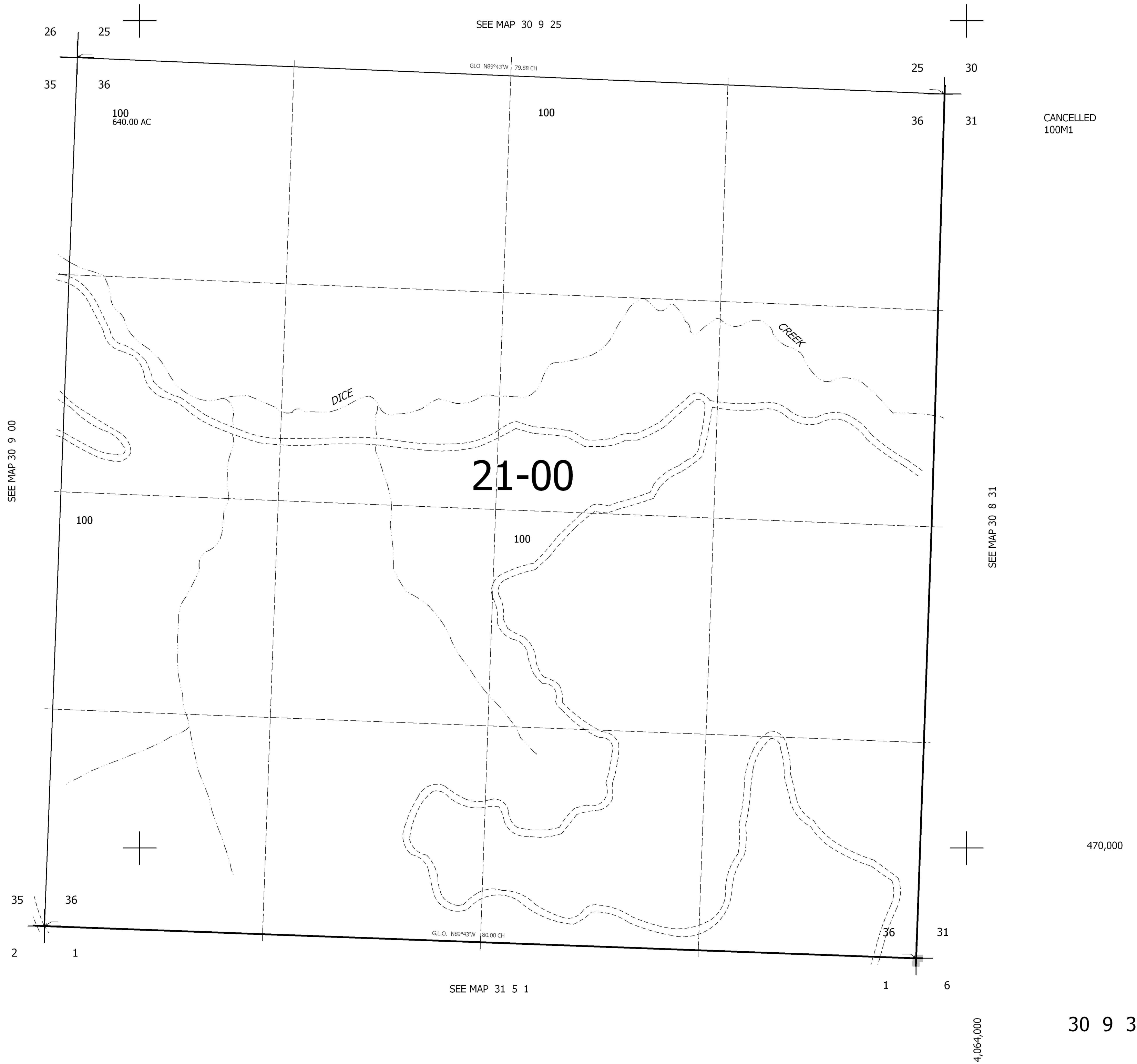
THIS MAP WAS PREPARED FOR
ASSESSMENT PURPOSE ONLY.

SEC.36 T30S. R.9W. W.M.
DOUGLAS COUNTY

REVISED ON

30 9 36

1" = 400'



SEE MAP 30 9 25

G.L.O. N89°43'W 79.88 CH

100
640.00 AC

100

CANCELLED
100M1

SEE MAP 30 9 00

SEE MAP 30 8 31

21-00

100

100

470,000

G.L.O. N89°43'W 180.00 CH

SEE MAP 31 5 1

4,064,000

30 9 36