

THIS MAP WAS PREPARED FOR ASSESSMENT PURPOSE ONLY.

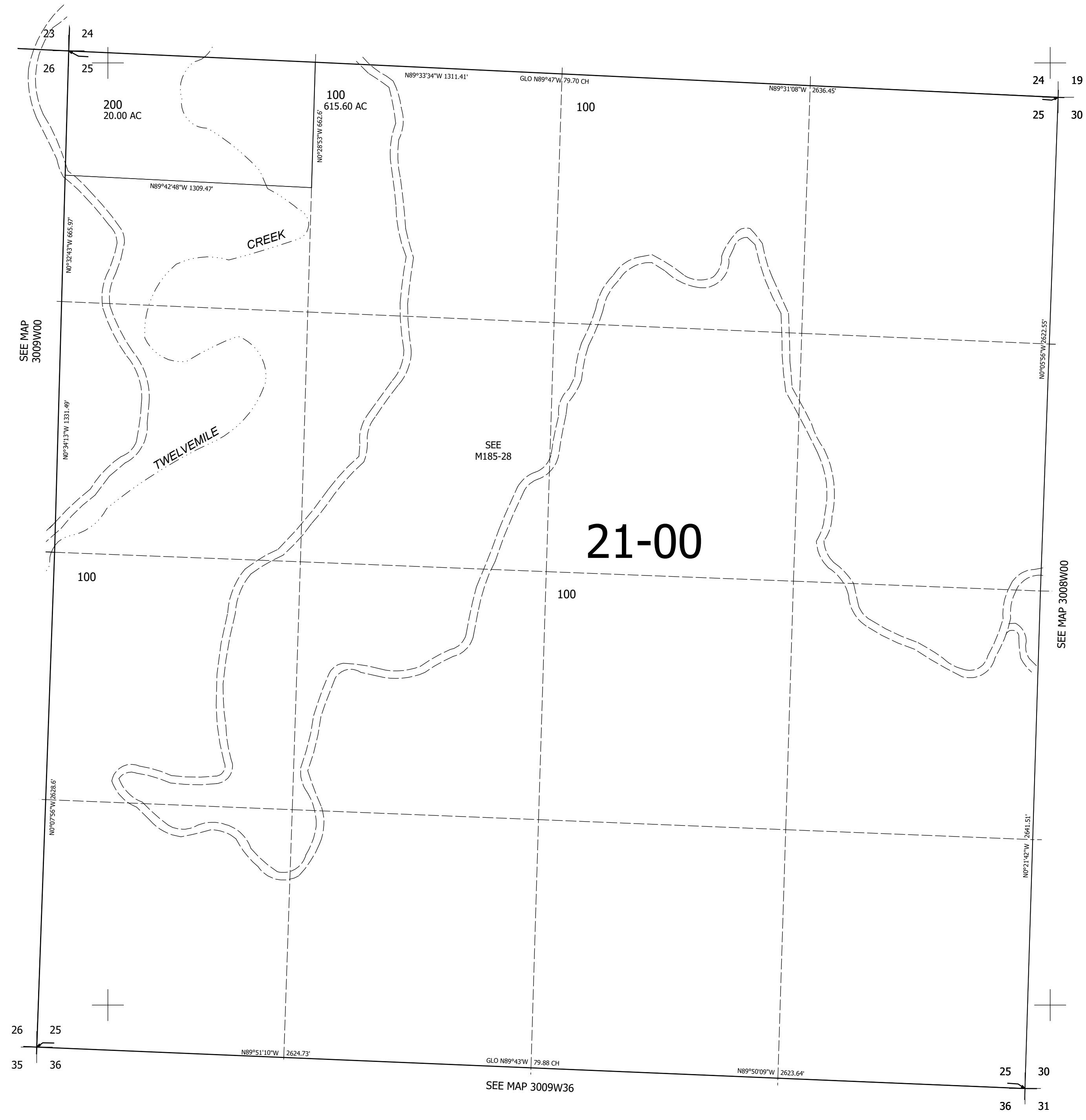
Upper Left:
123°43'38"W 42°56'26"N
4057368E 480891N ft

SEC.25 T.30S. R.09W. W.M.
DOUGLAS COUNTY
1" = 400'

Date Exported 2025-02-26

300925

CANCELLED NOS:



300925

Lower Right:
123°41'49"W 42°55'20"N
4065218E 473936N ft