

THIS MAP WAS PREPARED FOR ASSESSMENT PURPOSE ONLY.

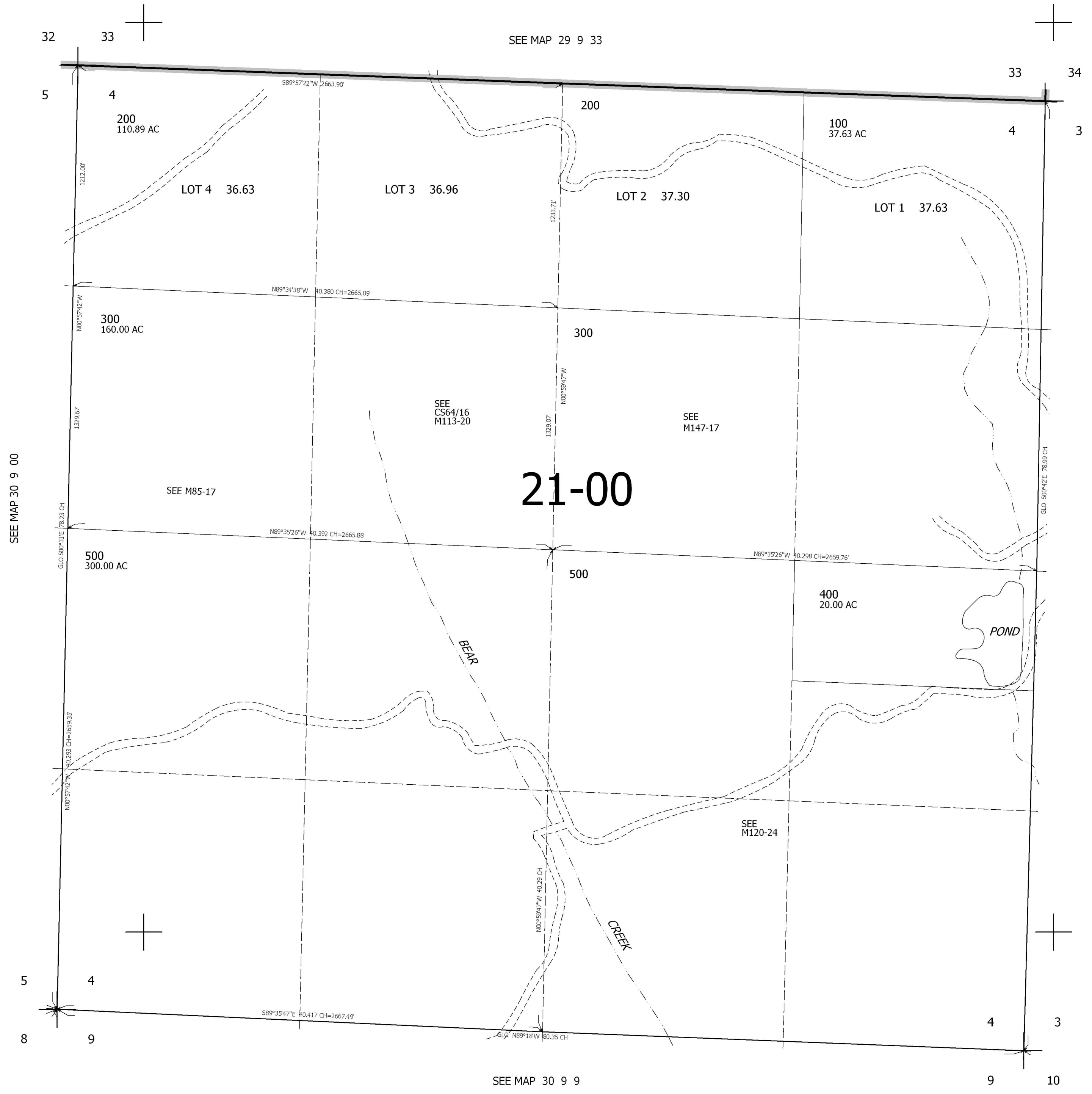
SEC.4 T30S. R.9W. W.M. DOUGLAS COUNTY

REVISED ON

30 9 4

1" = 400'

SEE MAP 29 9 33



CANCELLED

SEE MAP 30 9 00

SEE MAP 30 9 00

21-00

497,000

SEE MAP 30 9 9

30 9 4

4,049,000