

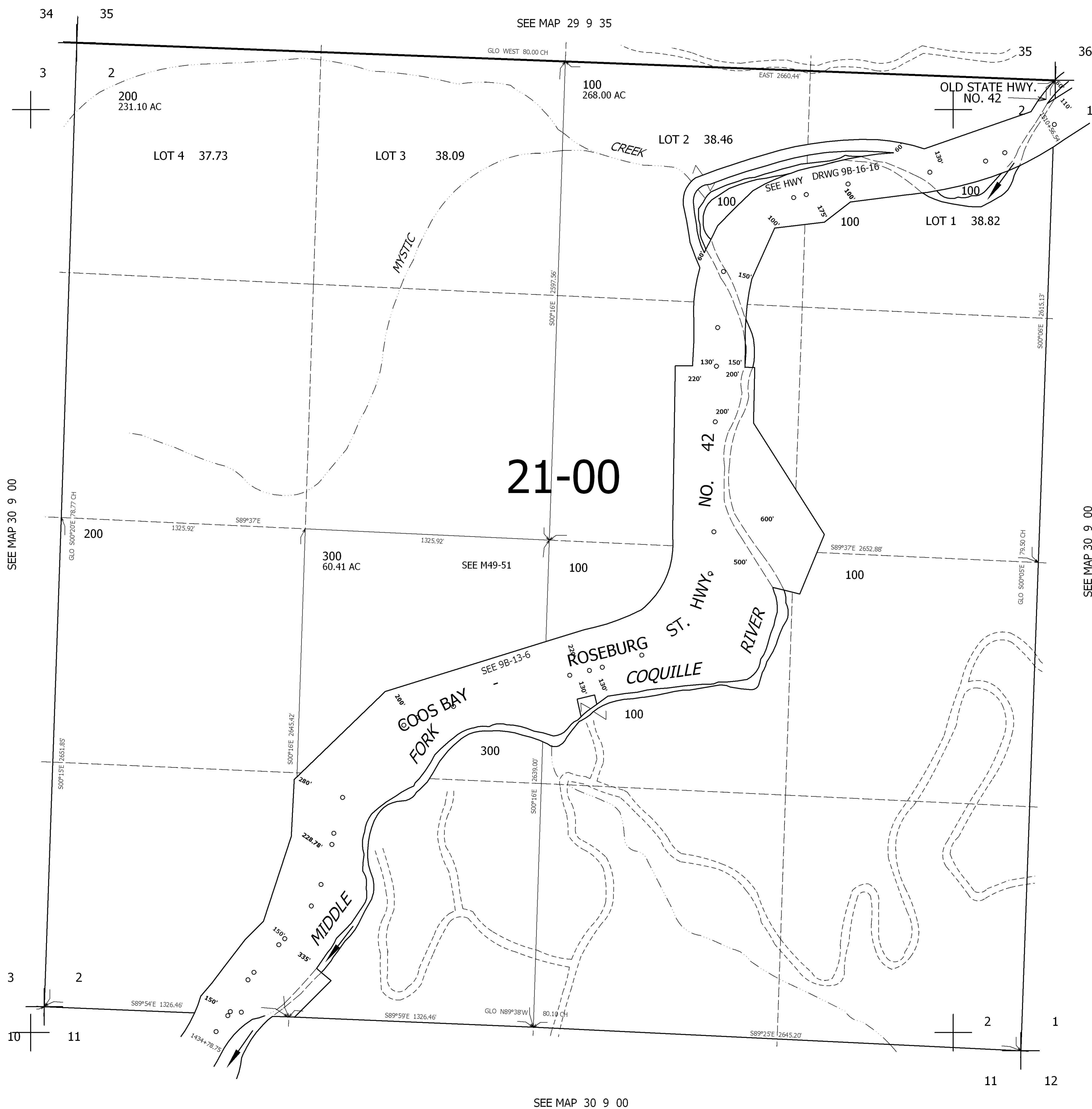
THIS MAP WAS PREPARED FOR ASSESSMENT PURPOSE ONLY.

SEC.2 T30S. R.9W. W.M.
DOUGLAS COUNTY

REVISED ON

1" = 400'

CANCELLED



SEE MAP 30 9 00

SEE MAP 30 9 00

SEE MAP 30 9 00

496,000

4,059,000