

THIS MAP WAS PREPARED FOR  
ASSESSMENT PURPOSE ONLY.

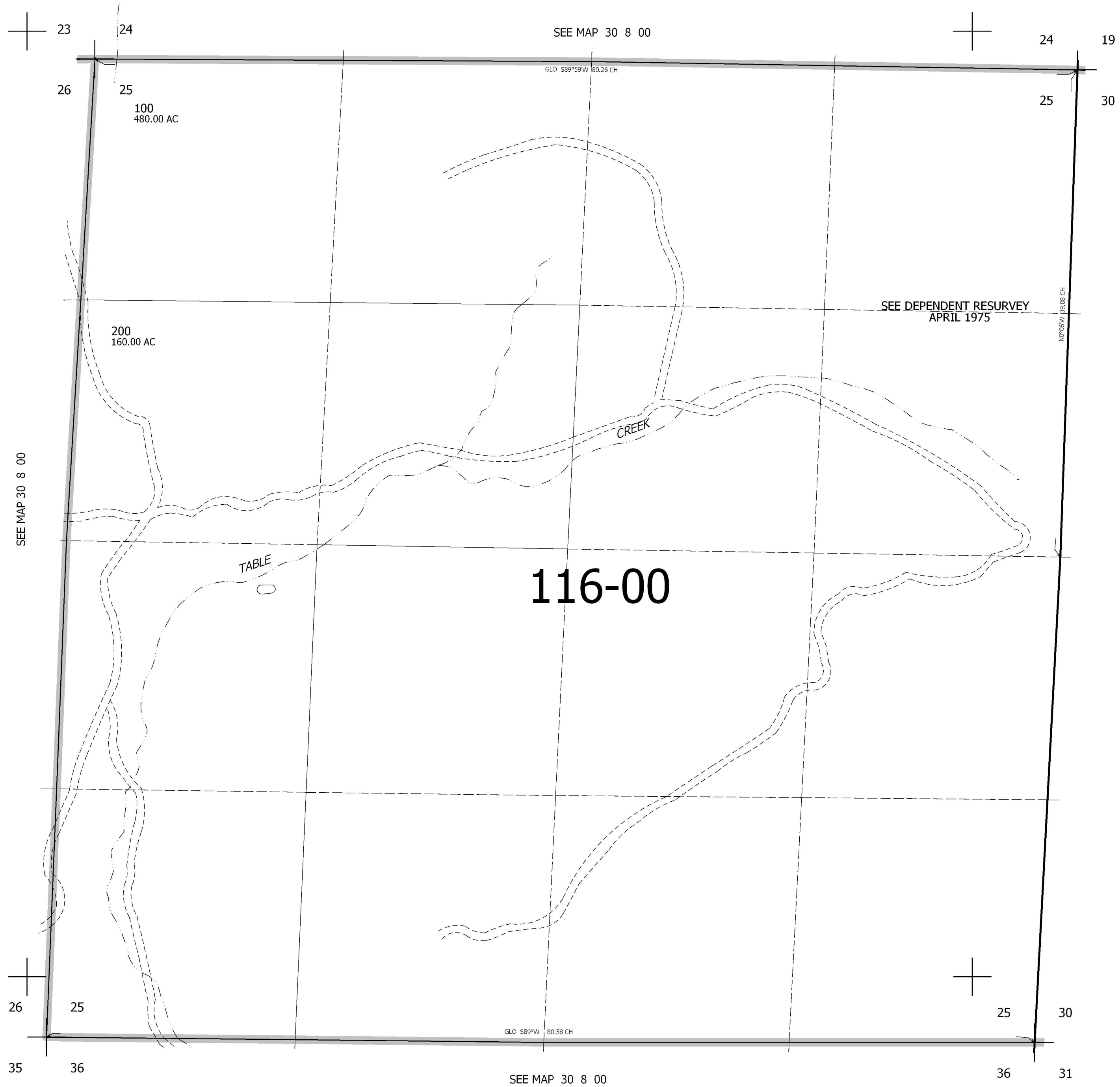
SEC.25 T30S. R.8W. W.M.  
DOUGLAS COUNTY

REVISED ON

30 8 25

1" = 400'

CANCELLED



SEE MAP 30 8 00

475,000

4,095,000

30 8 25