

THIS MAP WAS PREPARED FOR ASSESSMENT PURPOSE ONLY.

SEC.11 T30S. R.8W. W.M.
DOUGLAS COUNTY

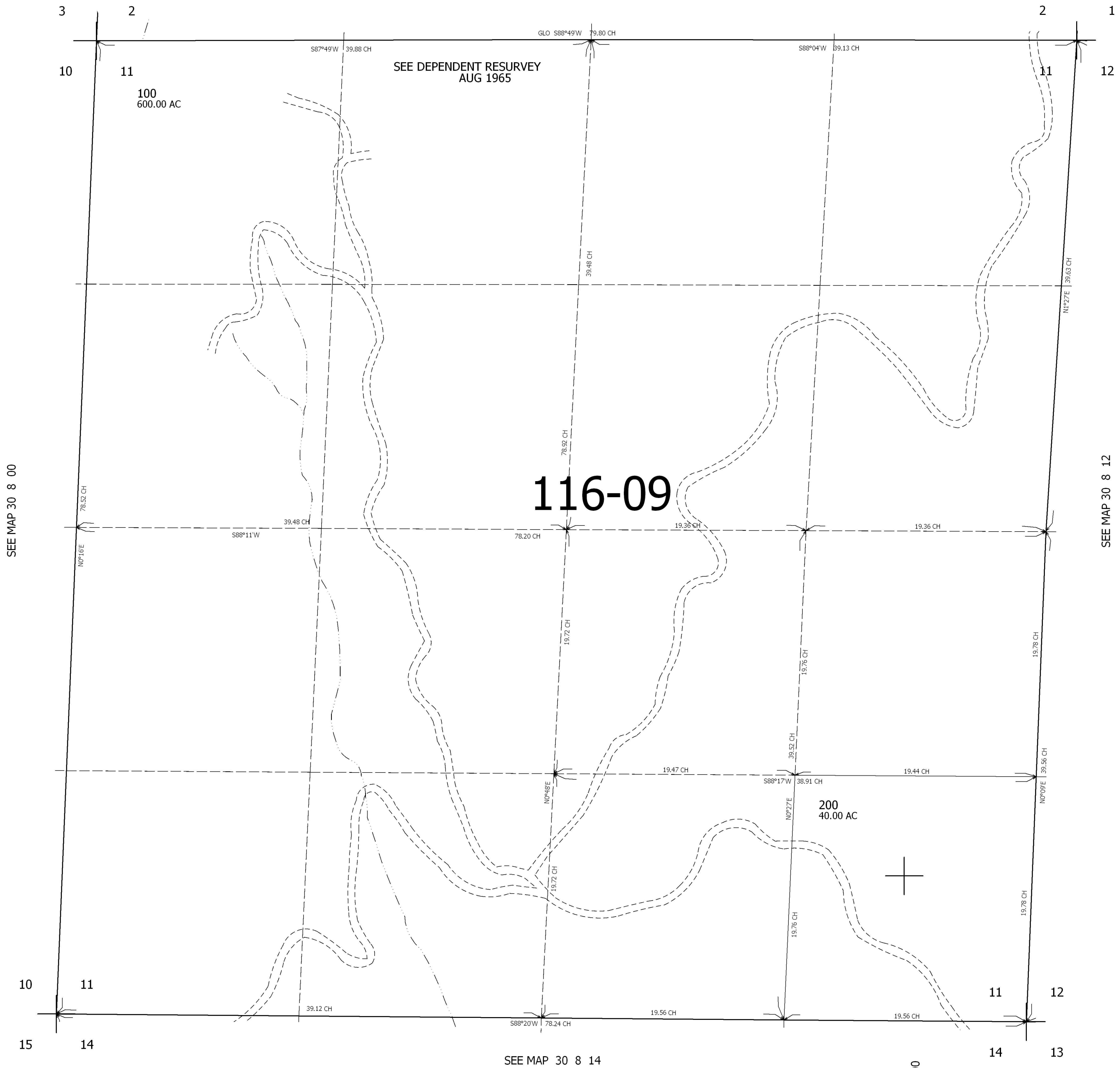
REVISED ON

30 8 11

1" = 400'

CANCELLED

SEE MAP 30 8 00



SEE MAP 30 8 14

4,090,000

30 8 11