

THIS MAP WAS PREPARED FOR  
ASSESSMENT PURPOSE ONLY.

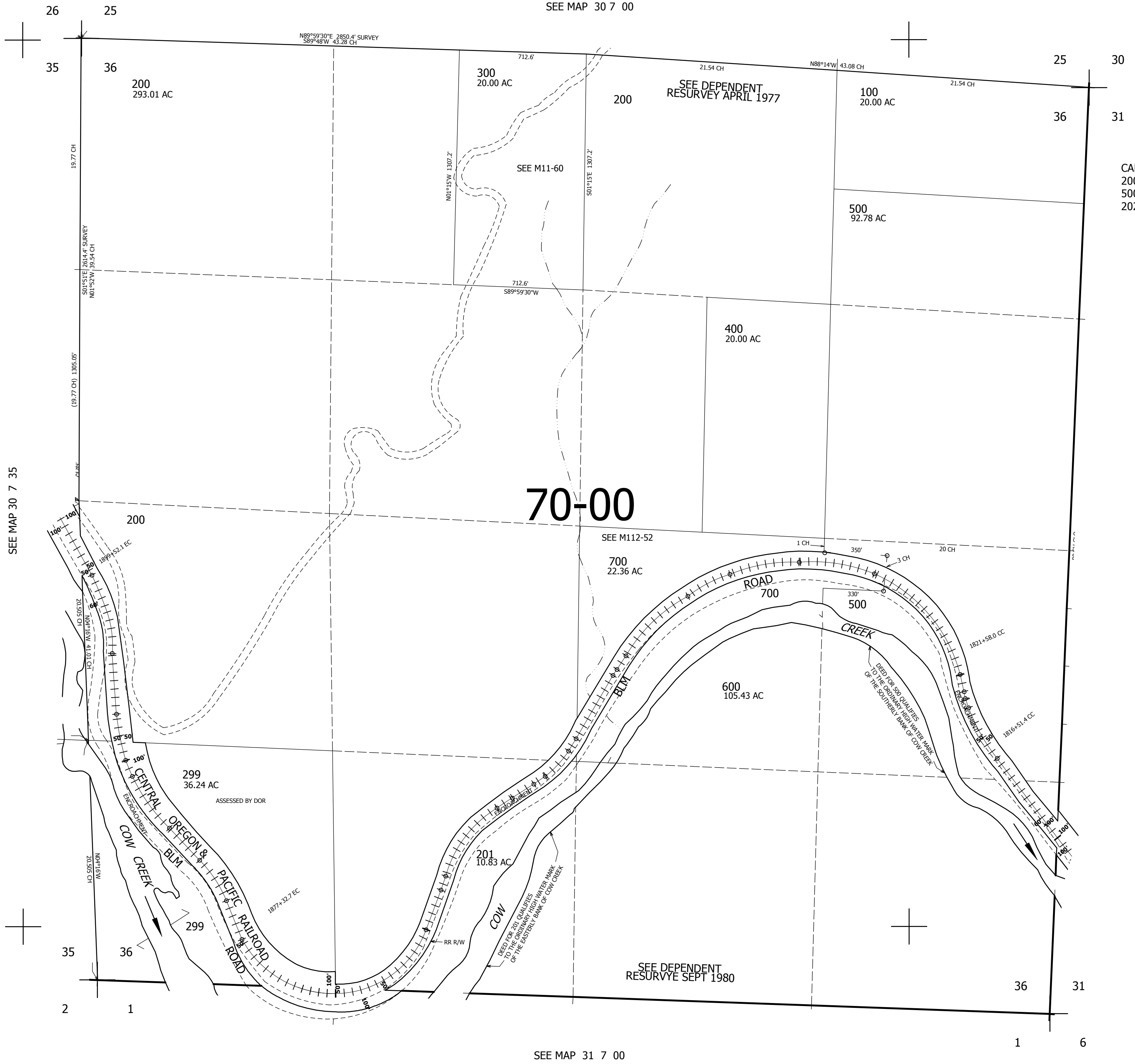
SEC.36 T30S. R.7W. W.M.  
DOUGLAS COUNTY

REVISED ON  
10-25-16

30 7 36

1" = 400'

SEE MAP 30 7 00



CANCELLED  
200M1 299M1 400M1  
500M1 600M1 700M1  
202 203 601 602

SEE MAP 30 6 00

469,000

SEE DEPENDENT  
RESURVYE SEPT 1980

SEE MAP 31 7 00

4,126,000

30 7 36