

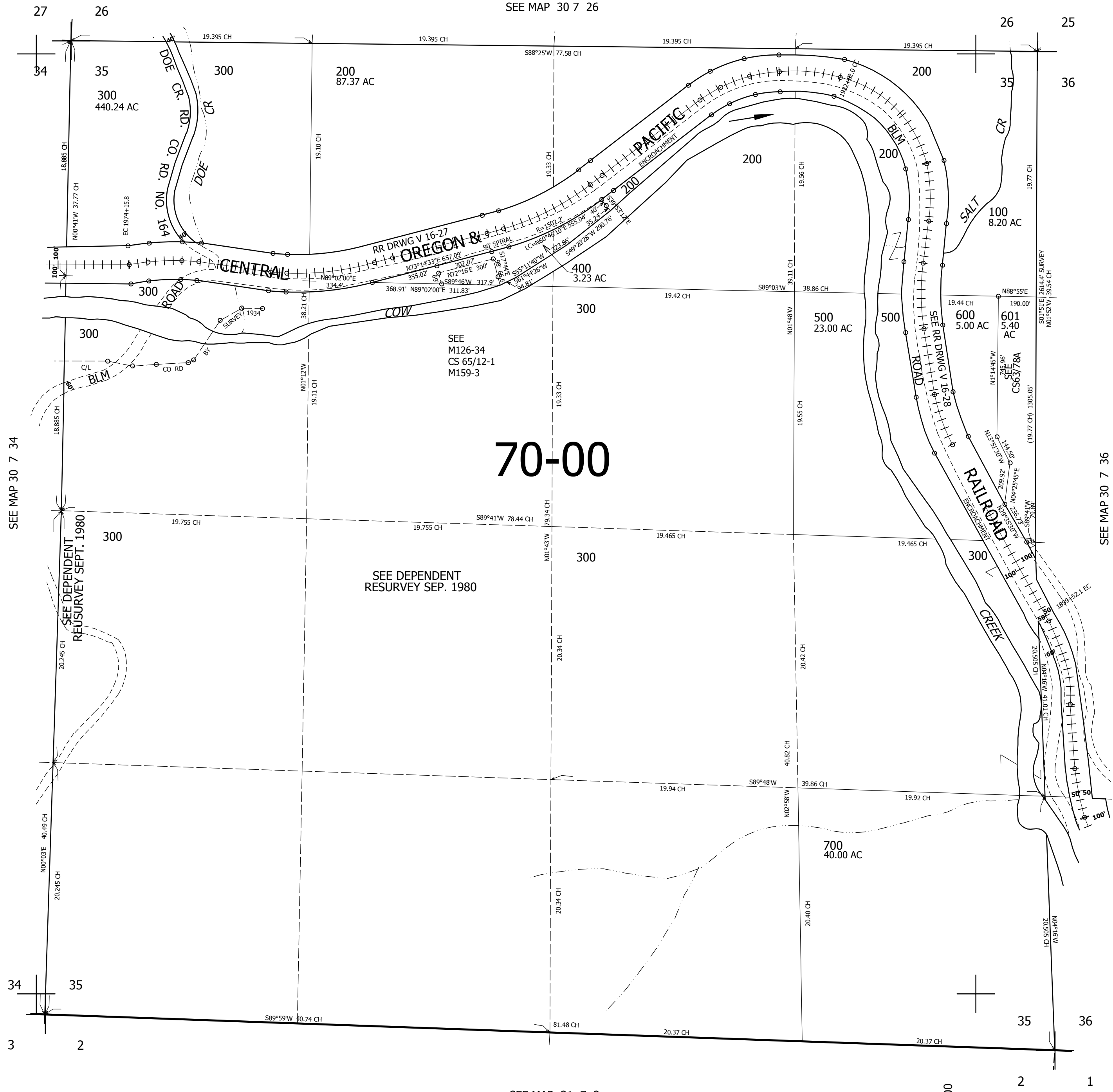
THIS MAP WAS PREPARED FOR  
ASSESSMENT PURPOSE ONLY.

SEC.35 T30S. R.7W. W.M.  
DOUGLAS COUNTY

1" = 400'

REVISED ON  
10-25-16

30 7 35



CANCELLED NO'S  
700M1 201

70-00

SEE DEPENDENT  
RESURVEY SEPT. 1980

SEE  
M126-34  
CS 65/12-1  
M159-3

469,000

SEE MAP 31 7 2

4,121,000

30 7 35