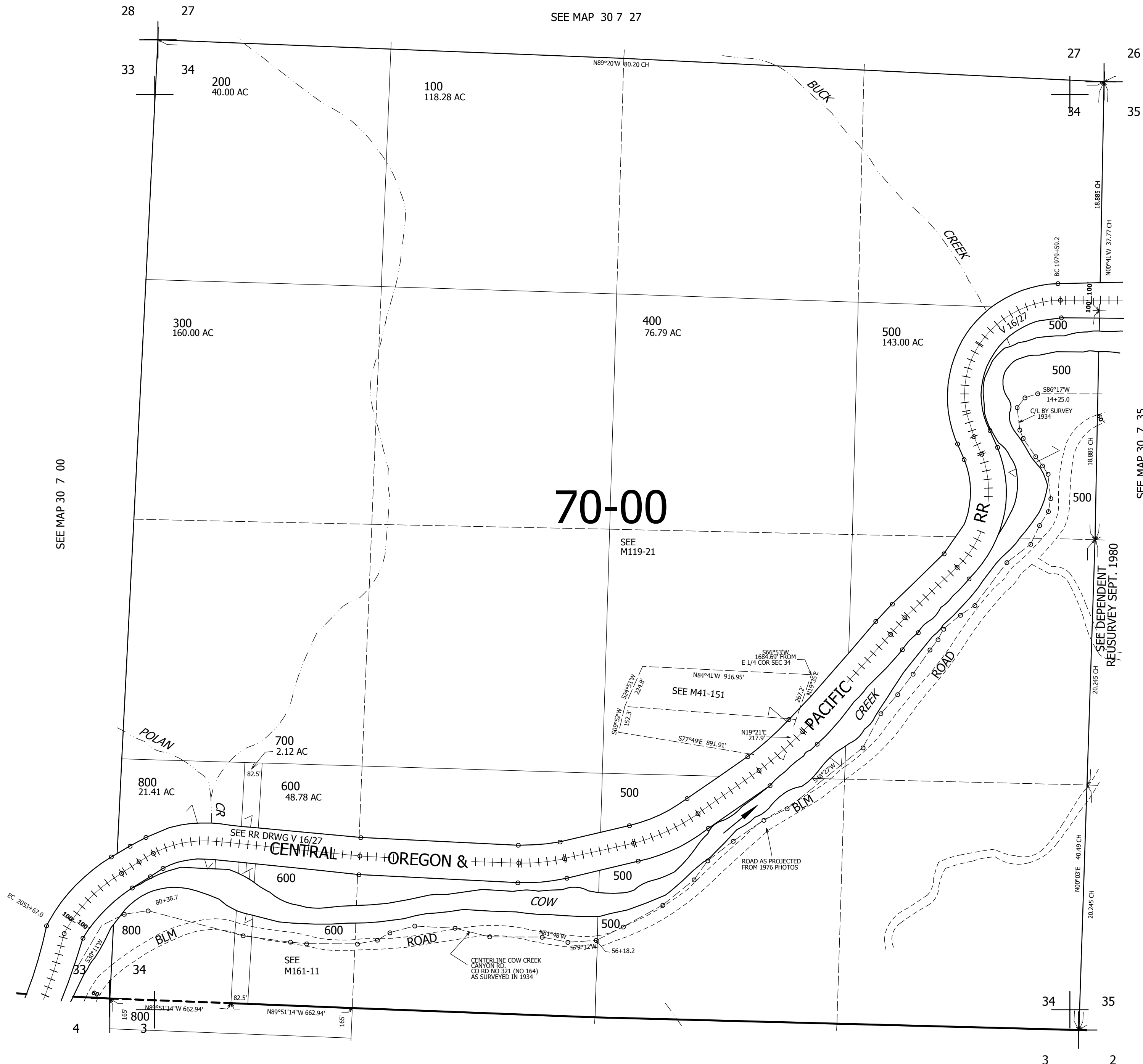


THIS MAP WAS PREPARED FOR ASSESSMENT PURPOSE ONLY.

SEC.34 T30S. R.7W. W.M.
DOUGLAS COUNTY
1" = 400'

REVISED ON
10-25-16

30 7 34



CANCELLED NO'S
300M1 700M1 900

SEE MAP 30 7 00

SEE MAP 30 7 35

SEE DEPENDENT
RE SURVEY SEPT. 1980

469,000

SEE MAP 31 7 3

4,116,000

30 7 34