

THIS MAP WAS PREPARED FOR ASSESSMENT PURPOSE ONLY.

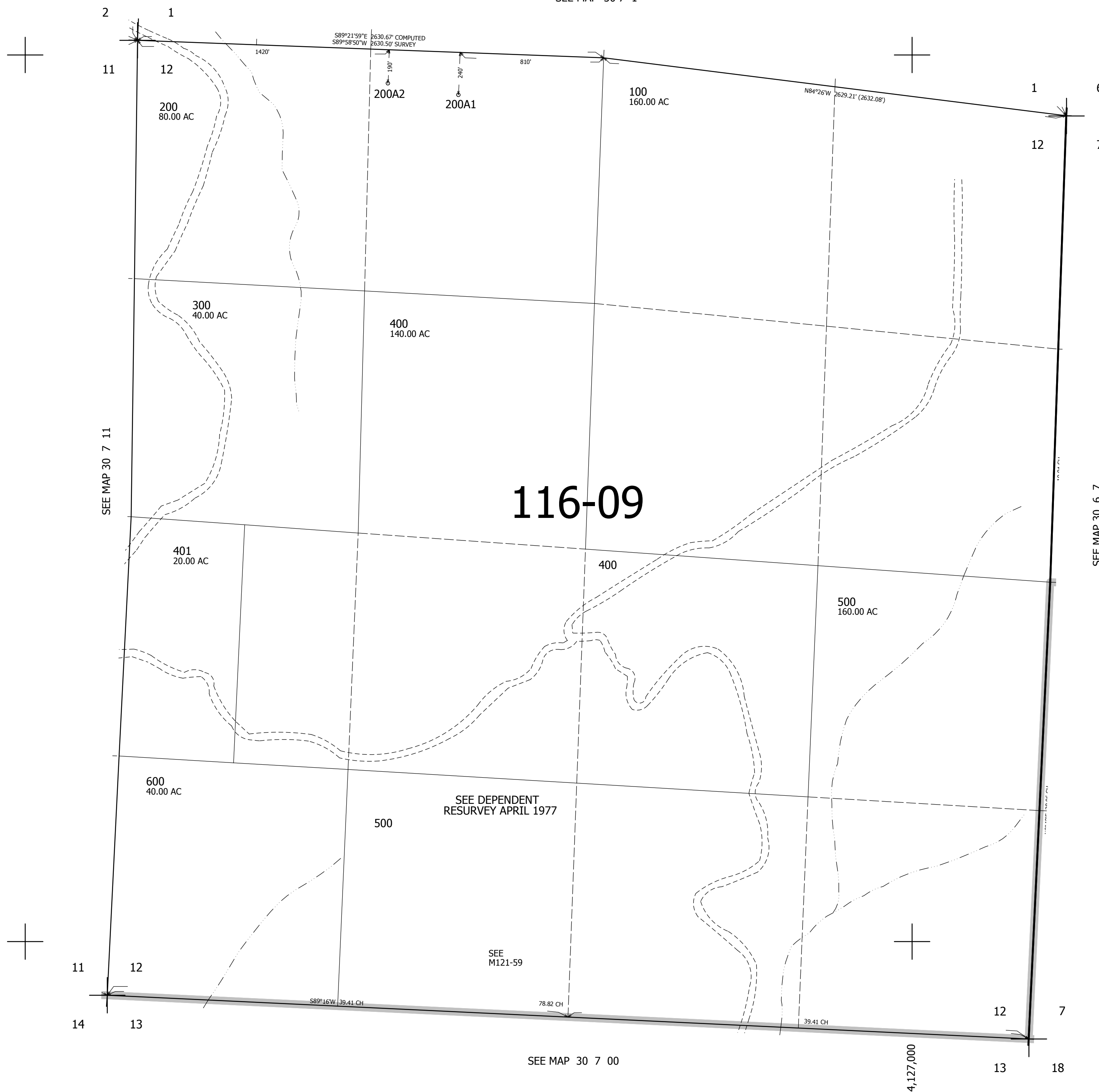
SEC.12 T30S. R.7W. W.M.
DOUGLAS COUNTY
1" = 400'

REVISED ON
1-24-12

30 7 12

CANCELLED
200M1 500M1

SEE MAP 30 7 1



SEE MAP 30 7 11

SEE MAP 30 6 7

SEE DEPENDENT
RESURVEY APRIL 1977

SEE
M121-59

SEE MAP 30 7 00

490,000

4,127,000

30 7 12