

THIS MAP WAS PREPARED FOR ASSESSMENT PURPOSE ONLY.

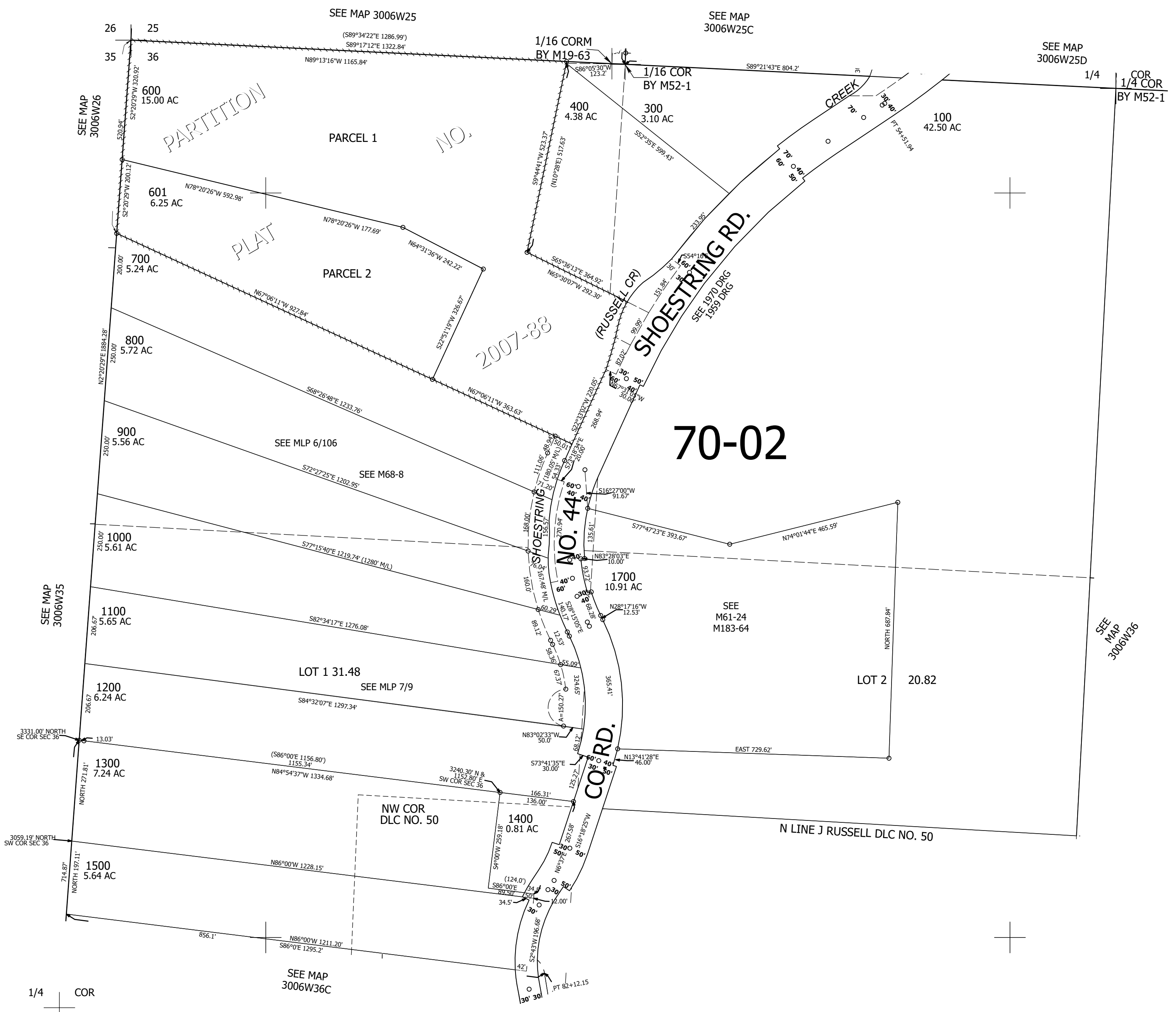
Upper Left:
123°22'11"W 42°55'41"N
4152896E 472870N ft

NW1/4 SEC.36 T.30S. R.06W. W.M.
DOUGLAS COUNTY
1" = 200'

Date Exported 2024-06-24

300636B

CANCELLED NOS:
200 500 1600



1/4 COR

SEE MAP 3006W36C

CEN SEC

300636B

Lower Right:
123°21'16"W 42°55'8"N
4156820E 469392N ft