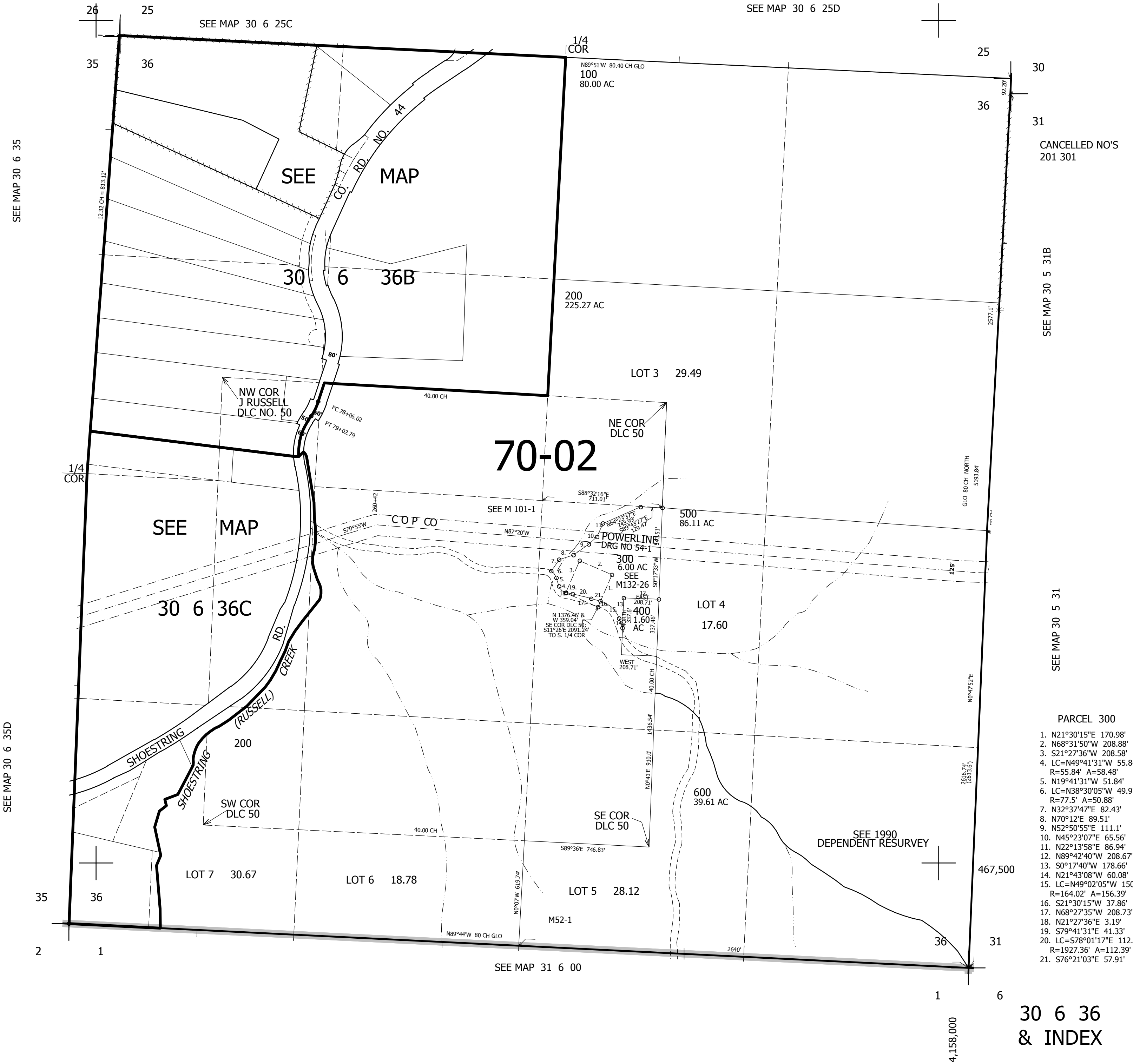


THIS MAP WAS PREPARED FOR ASSESSMENT PURPOSE ONLY.

SEC.36 T30S. R.6W. W.M.  
DOUGLAS COUNTY  
1" = 400'

REVISED ON  
11-2-12

30 6 36  
& INDEX



CANCELLED NO'S  
201 301

SEE MAP 30 5 31B

SEE MAP 30 5 31

- PARCEL 300
1. N21°30'15"E 170.98'
  2. N68°31'50"W 208.88'
  3. S21°27'36"W 208.58'
  4. LC=N49°41'31"W 55.84'  
R=55.84' A=58.48'
  5. N19°41'31"W 51.84'
  6. LC=N38°30'05"W 49.97'  
R=77.5' A=50.88'
  7. N32°37'47"E 82.43'
  8. N70°12'E 89.51'
  9. N52°50'55"E 111.1'
  10. N45°23'07"E 65.56'
  11. N22°13'58"E 86.94'
  12. N89°42'40"W 208.67'
  13. S0°17'40"W 178.66'
  14. N21°43'08"W 60.08'
  15. LC=N49°02'05"W 150.53'  
R=164.02' A=156.39'
  16. S21°30'15"W 37.86'
  17. N68°27'35"W 208.73'
  18. N21°27'36"E 3.19'
  19. S79°41'31"E 41.33'
  20. LC=S78°01'17"E 112.37'  
R=1927.36' A=112.39'
  21. S76°21'03"E 57.91'

30 6 36  
& INDEX

4,158,000