

THIS MAP WAS PREPARED FOR ASSESSMENT PURPOSE ONLY.

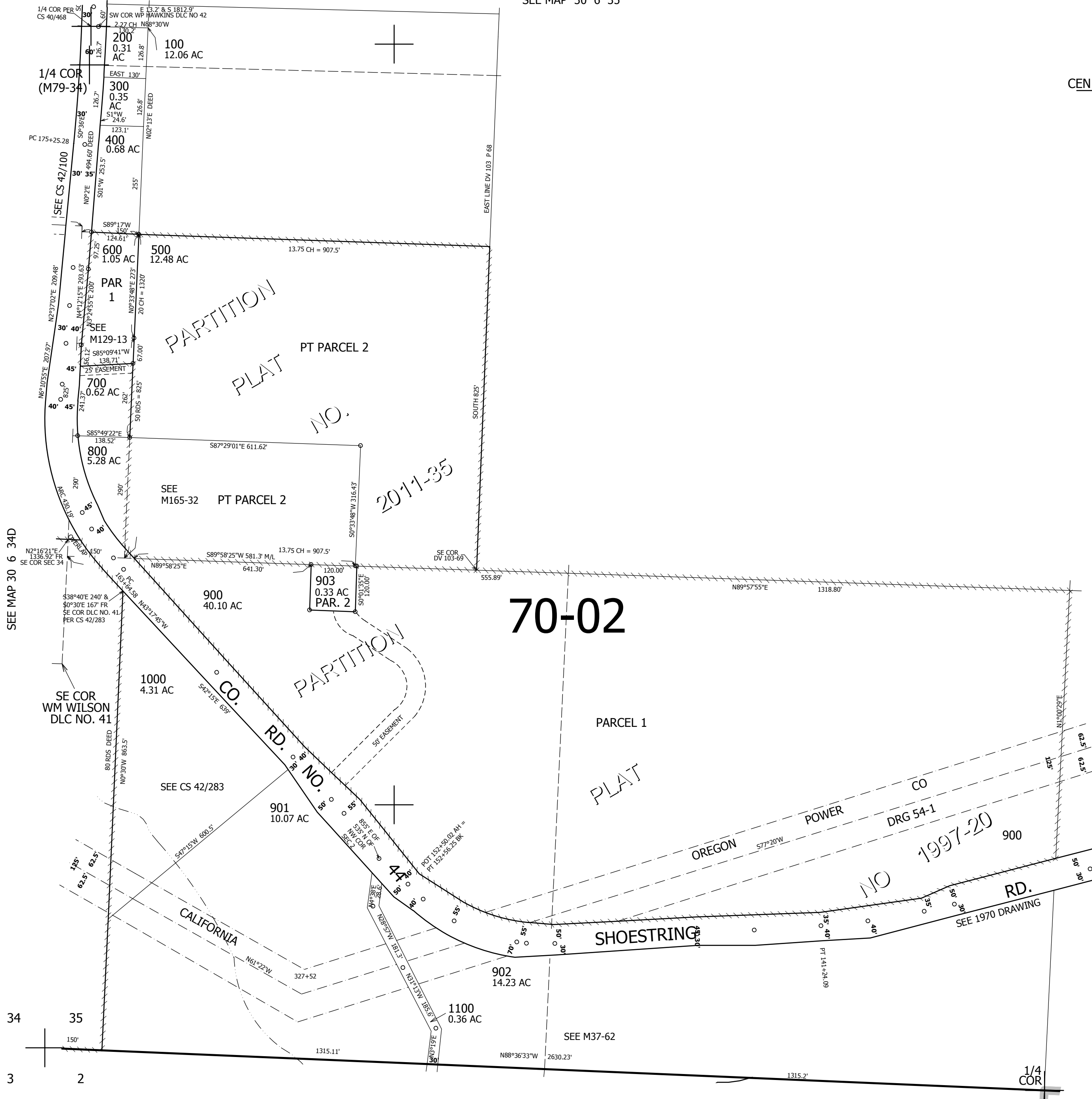
SW1/4 SEC.35 T30S. R.6W. W.M.  
DOUGLAS COUNTY

REVISED ON  
6-26-13

30 6 35C

1" = 200'

SEE MAP 30 6 35



CEN. SEC.

CANCELLED NO'S  
701 501

SEE MAP 30 6 35D

468,000

SEE MAP 31 6 2

4,151,000

30 6 35C