

THIS MAP WAS PREPARED FOR ASSESSMENT PURPOSE ONLY.

# SW1/4 SEC.34 T30S. R.6W. W.M. DOUGLAS COUNTY

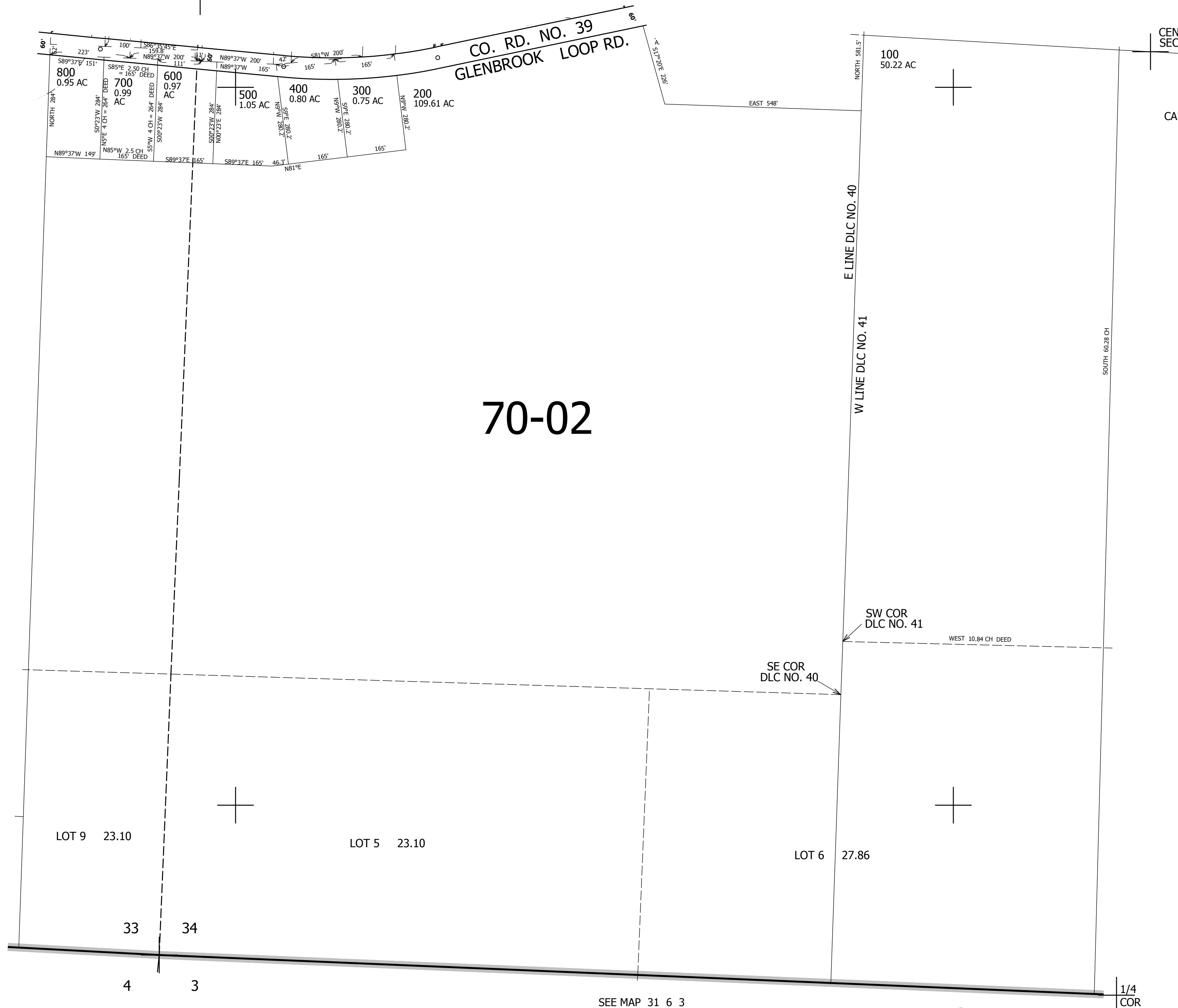
1" = 200'

REVISED ON  
11-2-12

30 6 34C

SEE MAP 30 6 34B

1/4 COR.



SEE MAP 30 6 33

SEE MAP 30 6 34D

## 70-02

CANCELLED NO'S

468,000

SEE MAP 31 6 3

4,145,000

30 6 34C