

THIS MAP WAS PREPARED FOR ASSESSMENT PURPOSE ONLY.

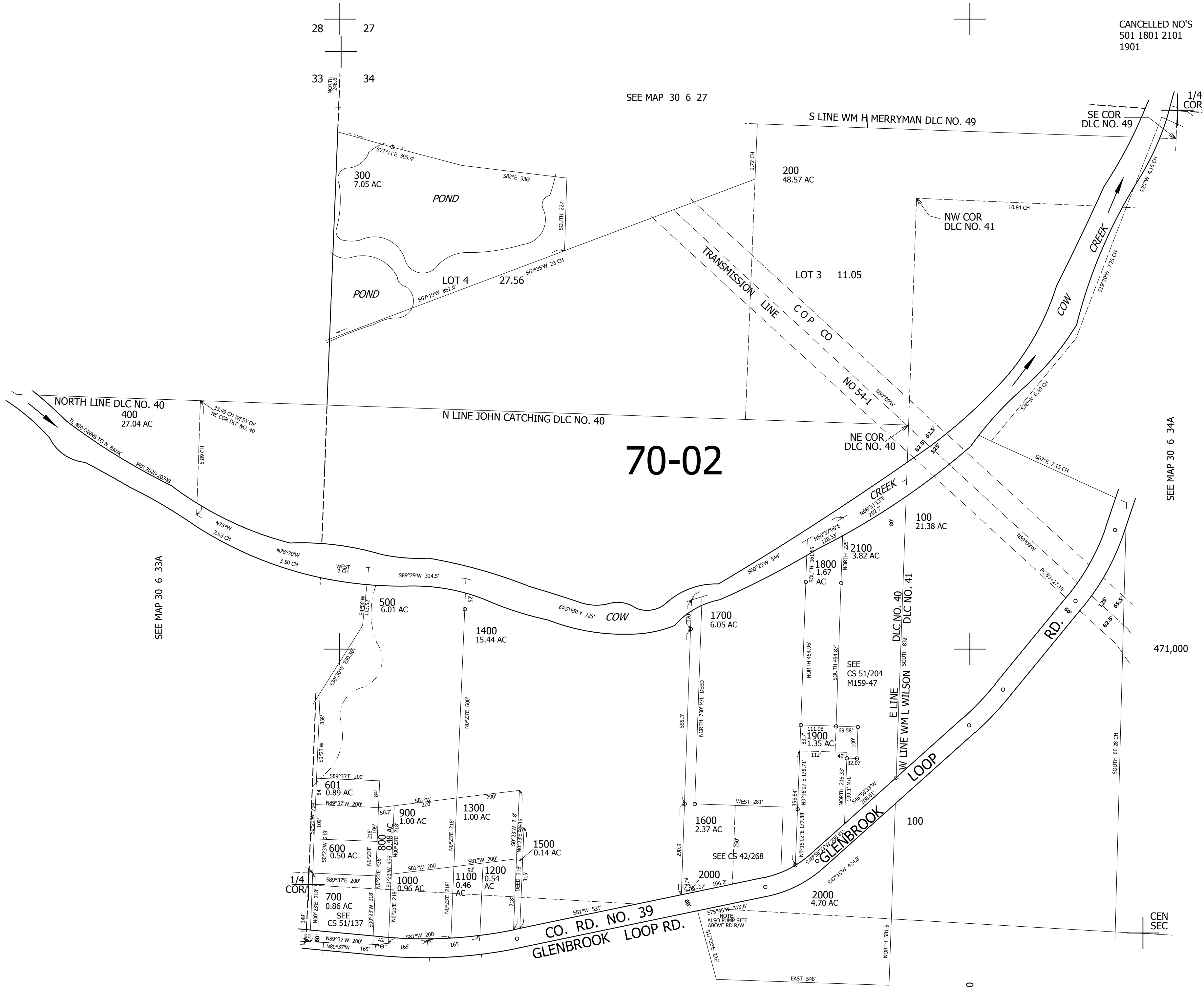
NW1/4 SEC.34 T30S. R.6W. W.M. DOUGLAS COUNTY

1" = 200'

REVISED ON 12-14-20

30 6 34B

CANCELLED NO'S 501 1801 2101 1901



70-02

SEE MAP 30 6 33A

SEE MAP 30 6 27

SEE MAP 30 6 34A

SEE MAP 30 6 34C

4,145,000

30 6 34B

471,000

CEN SEC