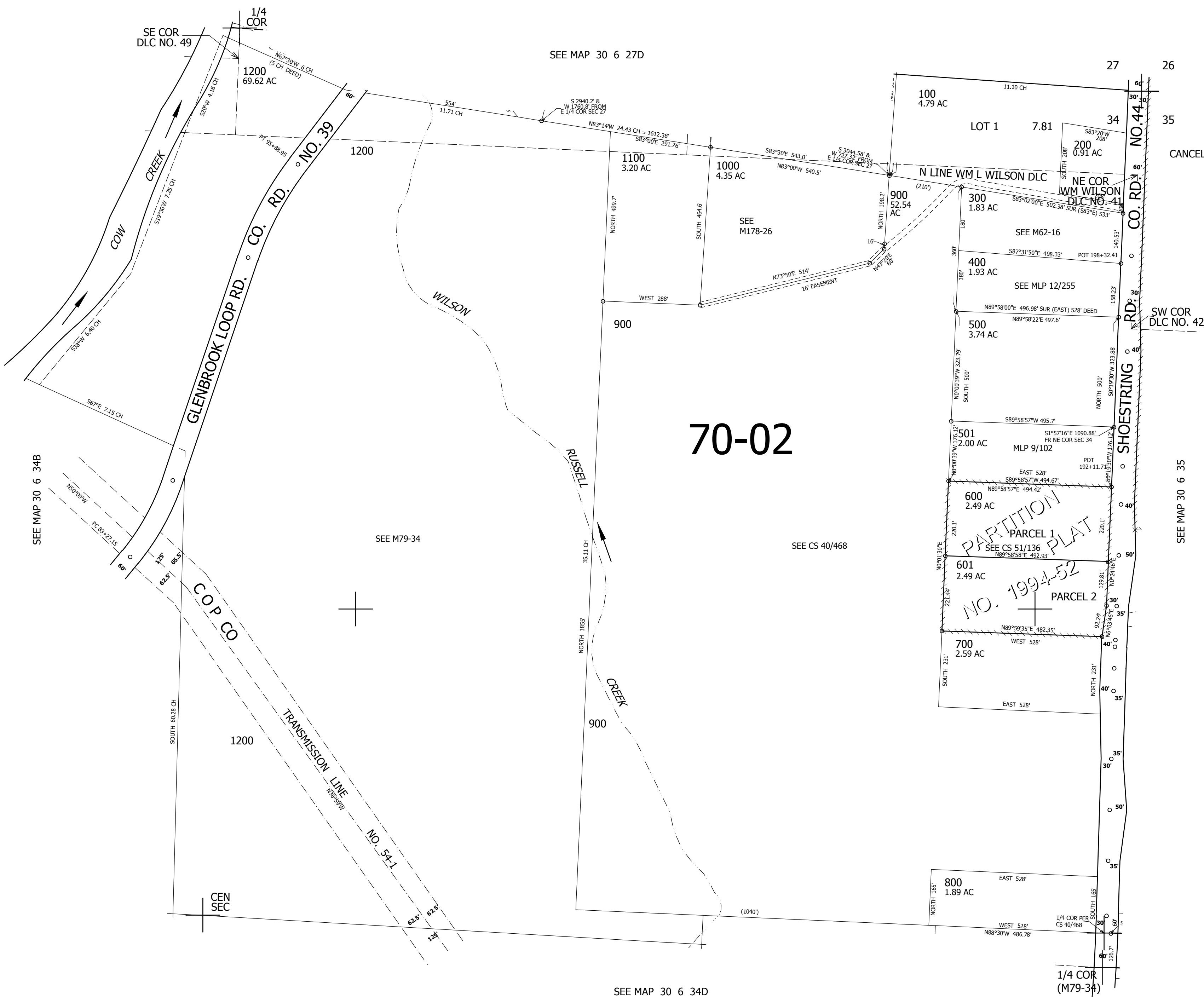


THIS MAP WAS PREPARED FOR ASSESSMENT PURPOSE ONLY.

NE1/4 SEC.34 T30S. R.6W. W.M. DOUGLAS COUNTY
1" = 200'

REVISED ON 11-2-12

30 6 34A



CANCELLED NO'S

SEE MAP 30 6 35

471,000

SEE MAP 30 6 34D

4,148,000

30 6 34A