

THIS MAP WAS PREPARED FOR ASSESSMENT PURPOSE ONLY.

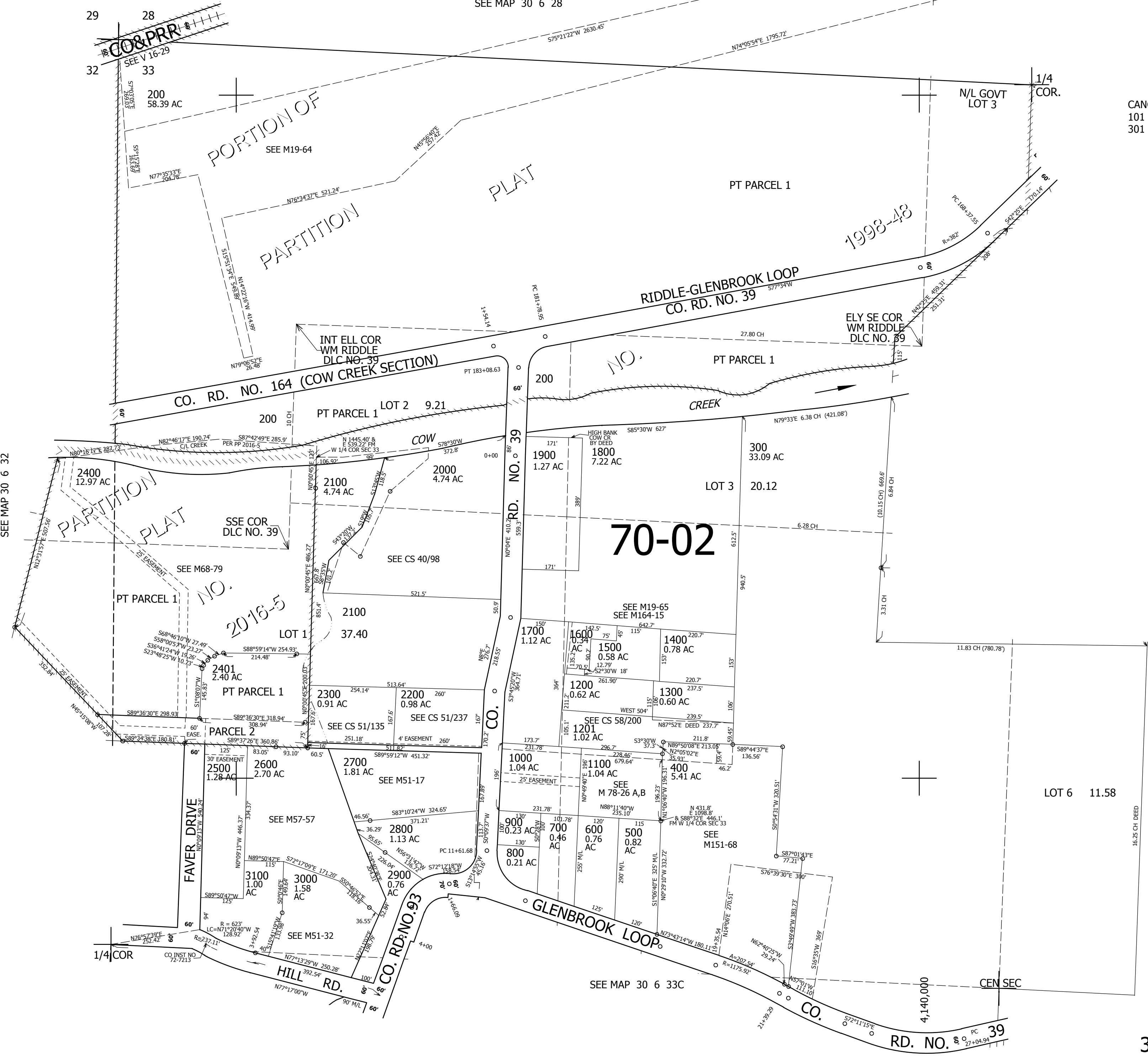
NW1/4 SEC.33 T30S. R.6W. W.M. DOUGLAS COUNTY

1" = 200'

30 6 33B

REVISED ON
3-28-16

SEE MAP 30 6 28



SEE MAP 30 6 32

SEE MAP 30 6 33A

CANCELLED NO'S
101 100 1600M1
301 401 2402

471,000

SEE MAP 30 6 33C

30 6 33B