

THIS MAP WAS PREPARED FOR ASSESSMENT PURPOSE ONLY.

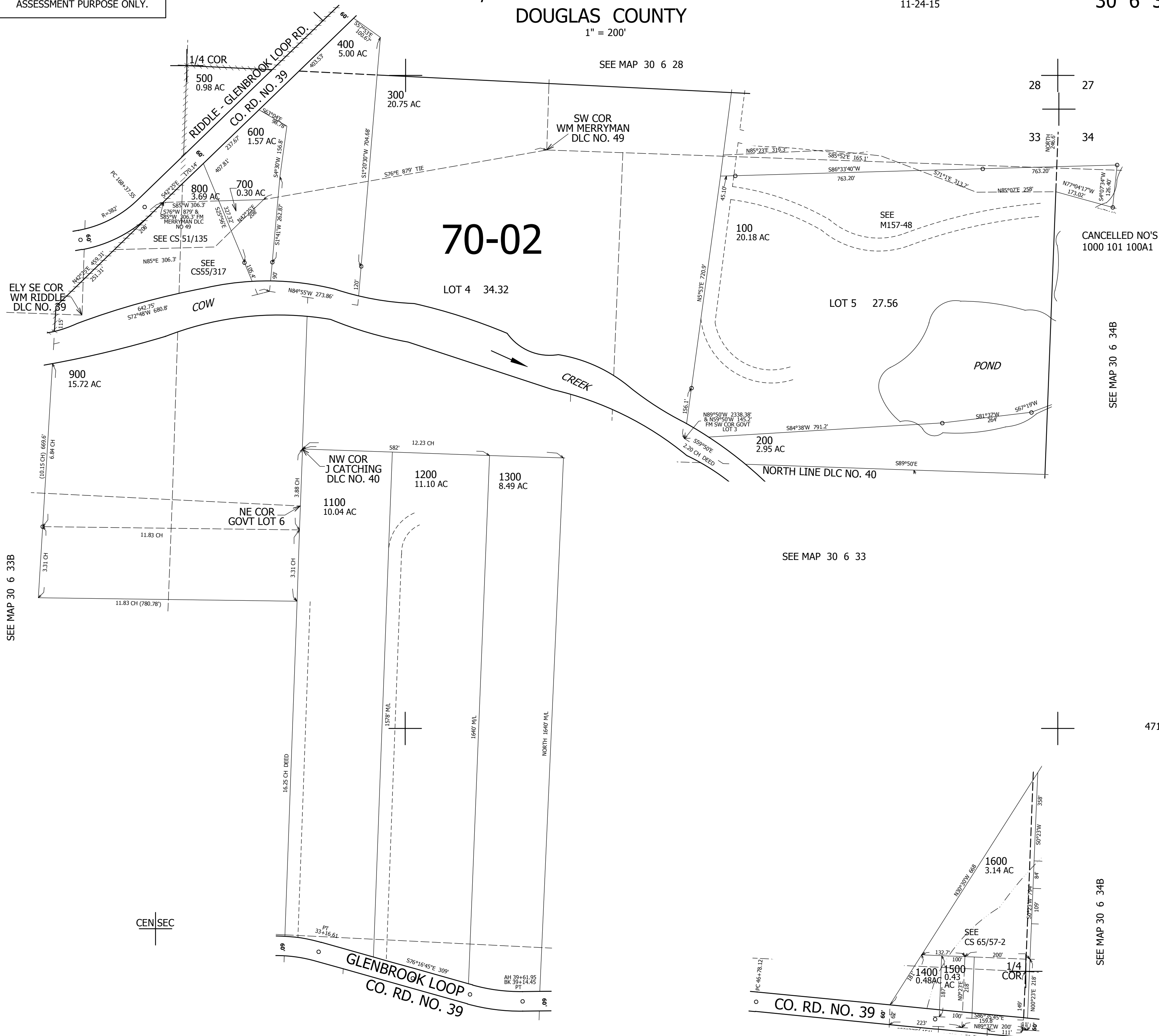
NE1/4 SEC.33 T30S. R.6W. W.M. DOUGLAS COUNTY

REVISED ON 11-24-15

30 6 33A

1" = 200'

SEE MAP 30 6 28



SEE MAP 30 6 33B

SEE MAP 30 6 34B

SEE MAP 30 6 33

471,000

SEE MAP 30 6 34B

SEE MAP 30 6 33

SEE MAP 30 6 34C

4,143,000

30 6 33A