

THIS MAP WAS PREPARED FOR ASSESSMENT PURPOSE ONLY.

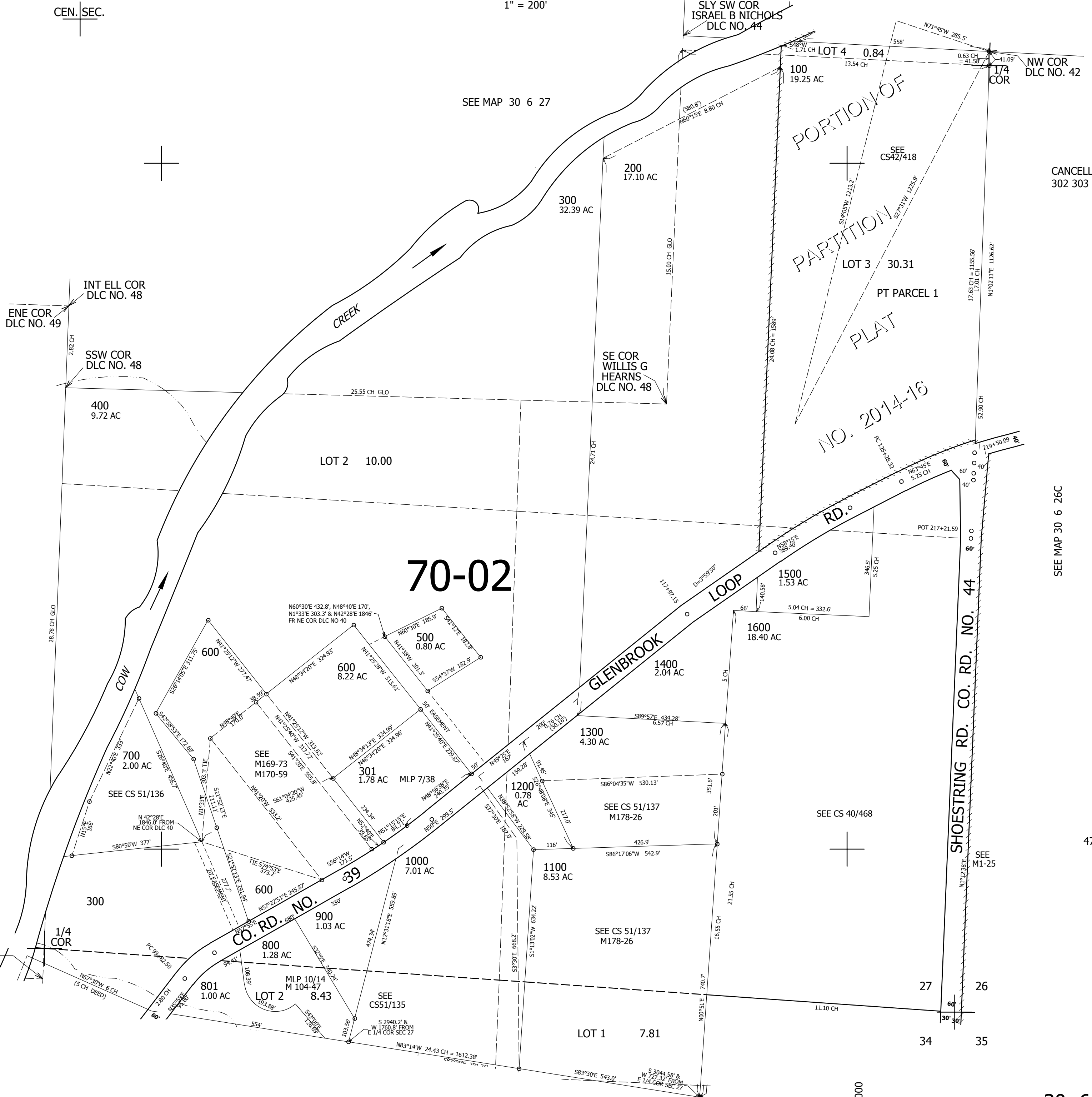
SE1/4 SEC.27 T30S. R.6W. W.M.  
DOUGLAS COUNTY

REVISED ON  
3-17-16

30 6 27D

1" = 200'

CEN. SEC.



SEE MAP 30 6 27

CANCELLED NO'S  
302 303

SEE MAP 30 6 27

70-02

SEE MAP 30 6 26C

473,000

SEE MAP 30 6 34A

4,148,000

30 6 27D