

THIS MAP WAS PREPARED FOR ASSESSMENT PURPOSE ONLY.

SE1/4 SEC.25 T30S. R.6W. W.M.
DOUGLAS COUNTY

1" = 200'

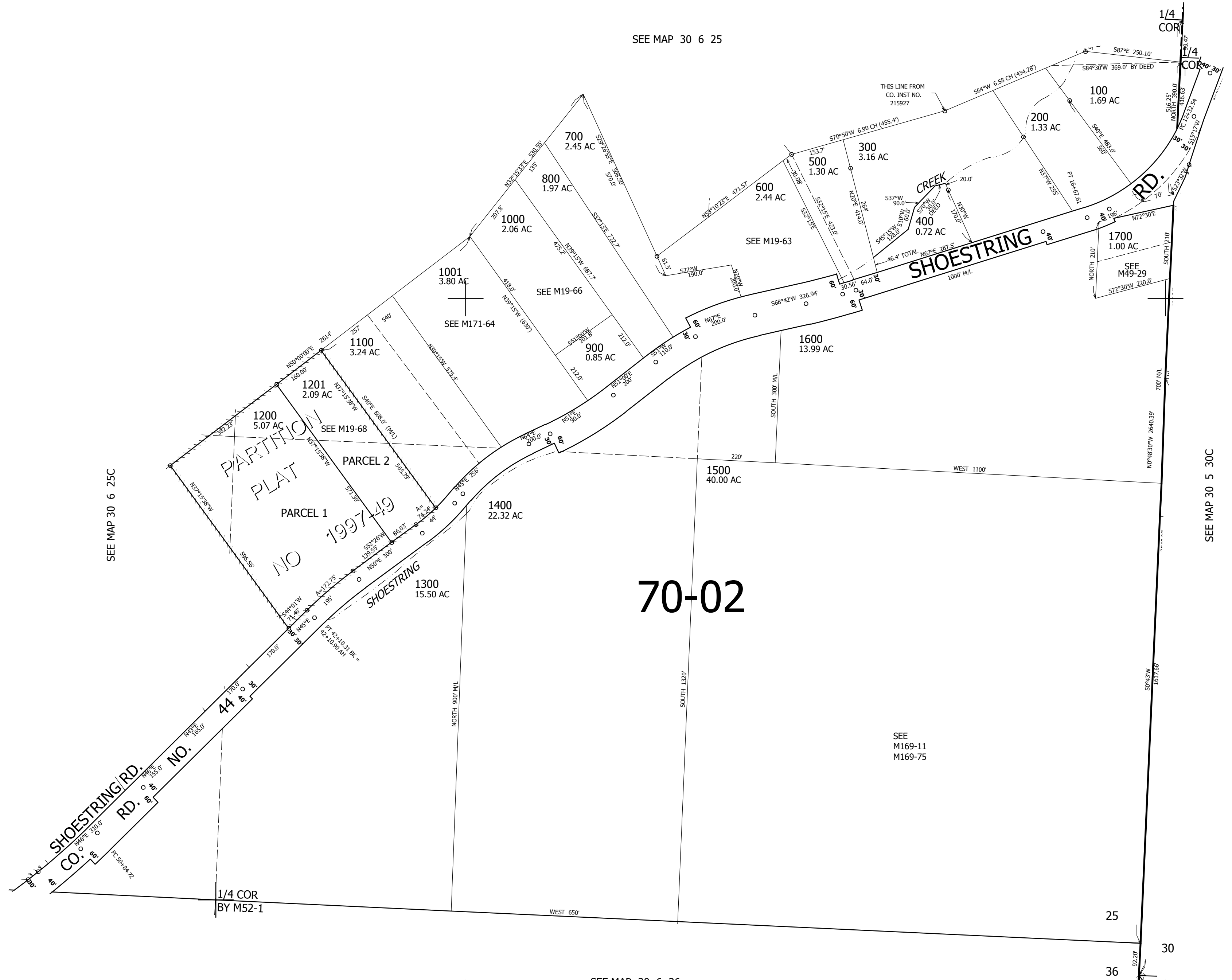
REVISED ON
11-1-12

30 6 25D

CANCELLED NO'S

CEN
SEC

SEE MAP 30 6 25



SEE MAP 30 6 25C

SEE MAP 30 5 30C

70-02

SEE
M169-11
M169-75

SEE MAP 30 6 36

25

30

36

31

30 6 25D

472,000

4,159,000