

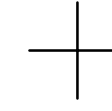
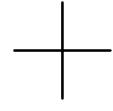
THIS MAP WAS PREPARED FOR ASSESSMENT PURPOSE ONLY.

SW1/4 SEC.25 T30S. R.6W. W.M.
DOUGLAS COUNTY
1" = 200'

REVISED ON
11-1-12

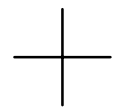
30 6 25C

1/4
COR

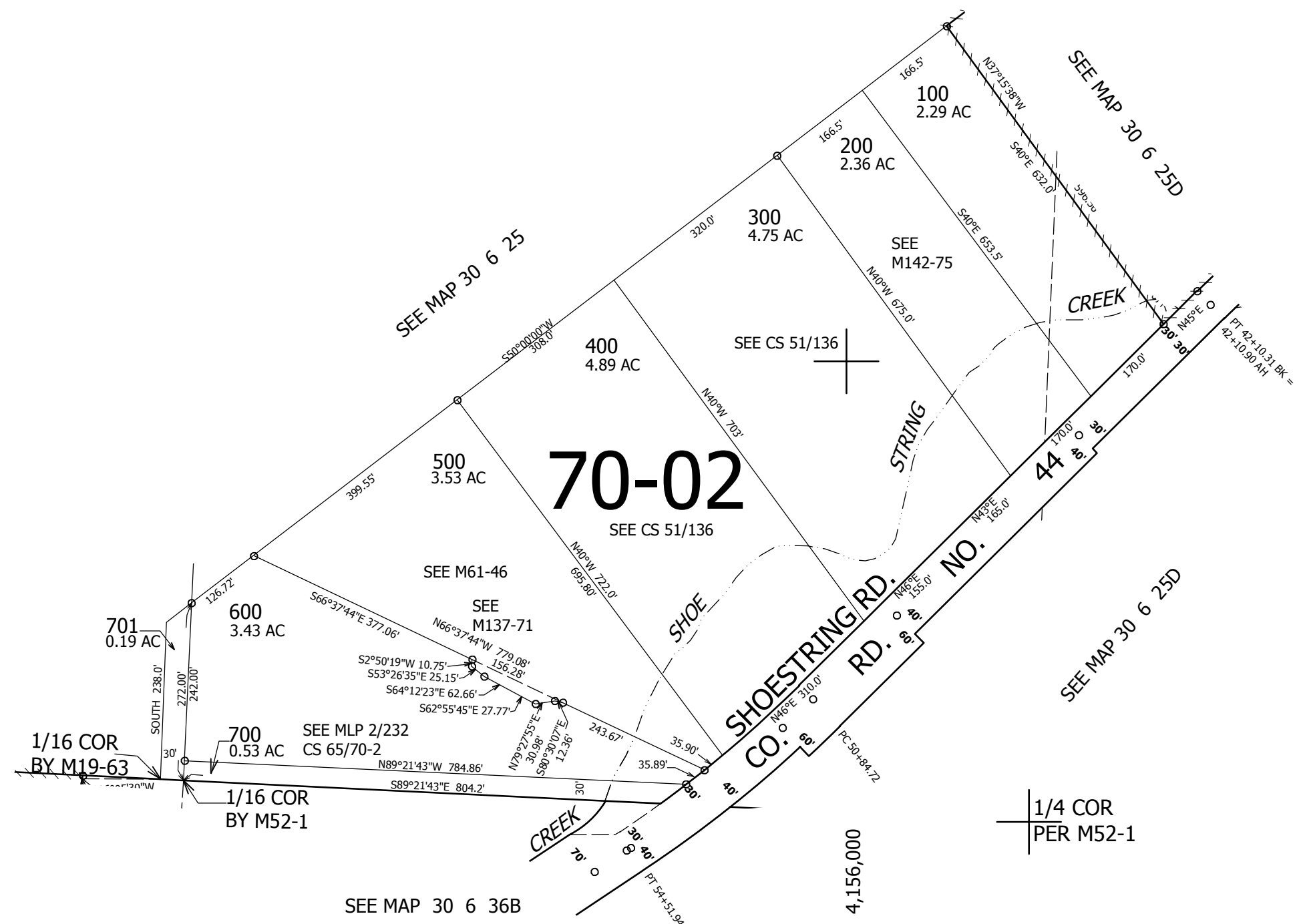
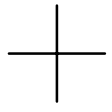


CEN
SEC

CANCELLED NO'S
601



26 25
35 36



473,000

4,156,000

30 6 25C