

THIS MAP WAS PREPARED FOR ASSESSMENT PURPOSE ONLY.

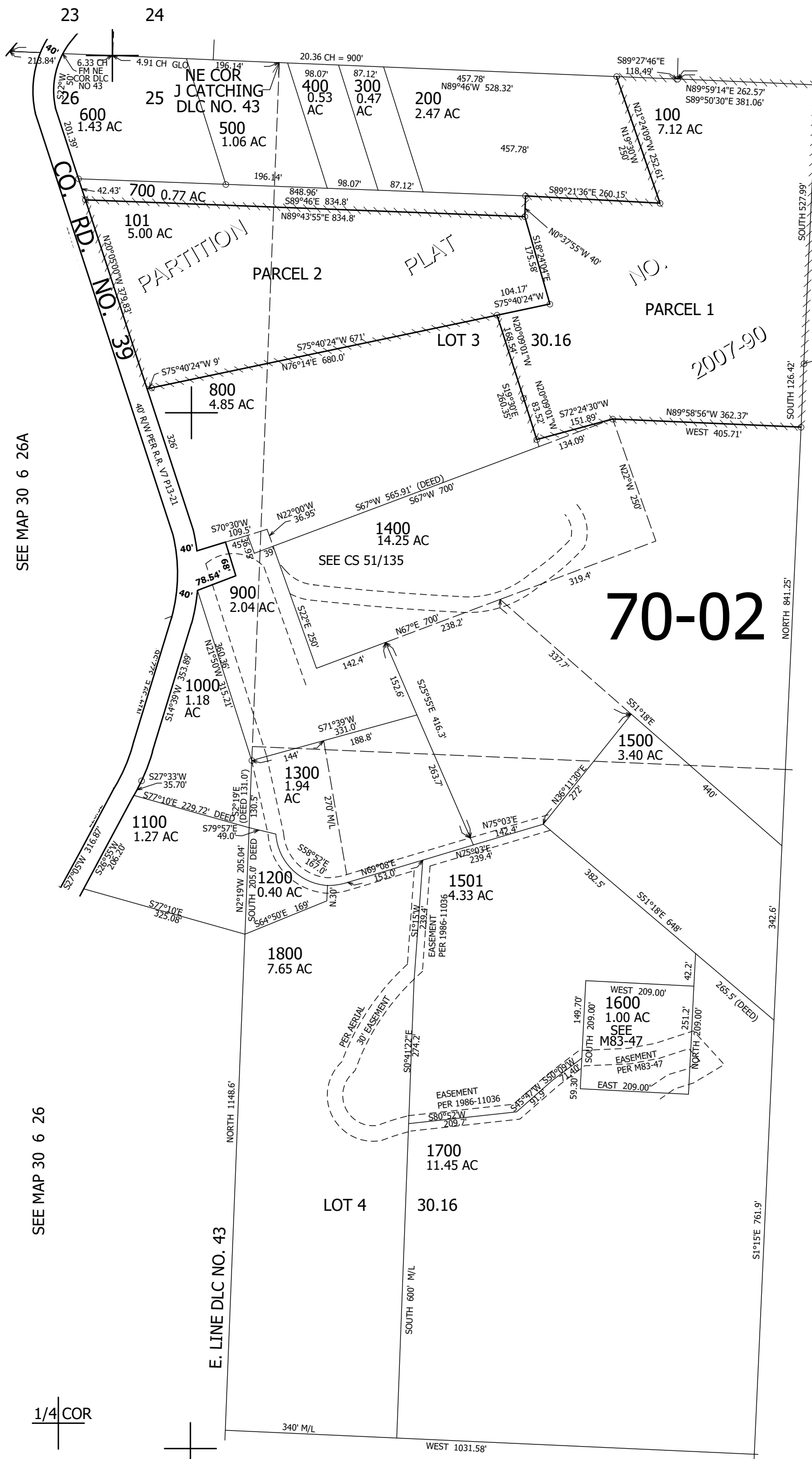
NW1/4 SEC.25 T30S. R.6W. W.M. DOUGLAS COUNTY

1" = 200'

REVISED ON
11-1-12

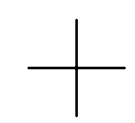
30 6 25B

SEE MAP 30 6 24



1/4 COR

CANCELLED NO'S
1301 102



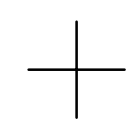
SEE MAP 30 6 25

SEE MAP 30 6 26A

SEE MAP 30 6 26

1/4 COR

SEE MAP 30 6 25



CEN SEC

475,000

4,156,000

30 6 25B