

THIS MAP WAS PREPARED FOR ASSESSMENT PURPOSE ONLY.

NE1/4 NE1/4 SEC.25 T30S. R.6W. W.M.
DOUGLAS COUNTY

REVISED ON
11-1-12

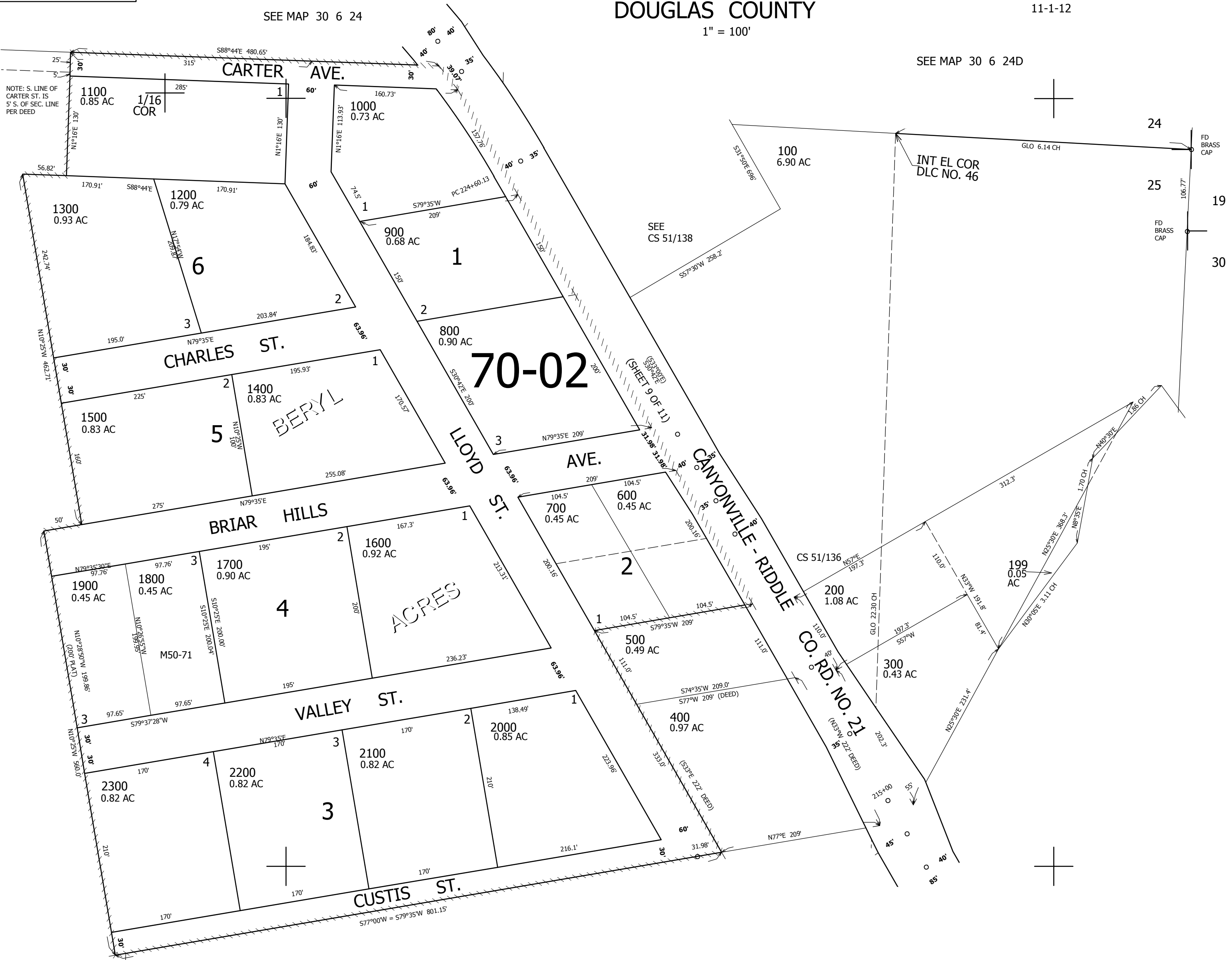
30 6 25AA

1" = 100'

CANCELLED NO'S

SEE MAP 30 6 24

SEE MAP 30 6 24D



SEE MAP 30 6 25

SEE MAP 30 5 30B

476,500

1/16 COR.

SEE MAP 30 6 25

1/16 COR.

SSW COR
JOHN W. BURCH
DLC NO. 46

4,159,000

30 6 25AA