

THIS MAP WAS PREPARED FOR ASSESSMENT PURPOSE ONLY.

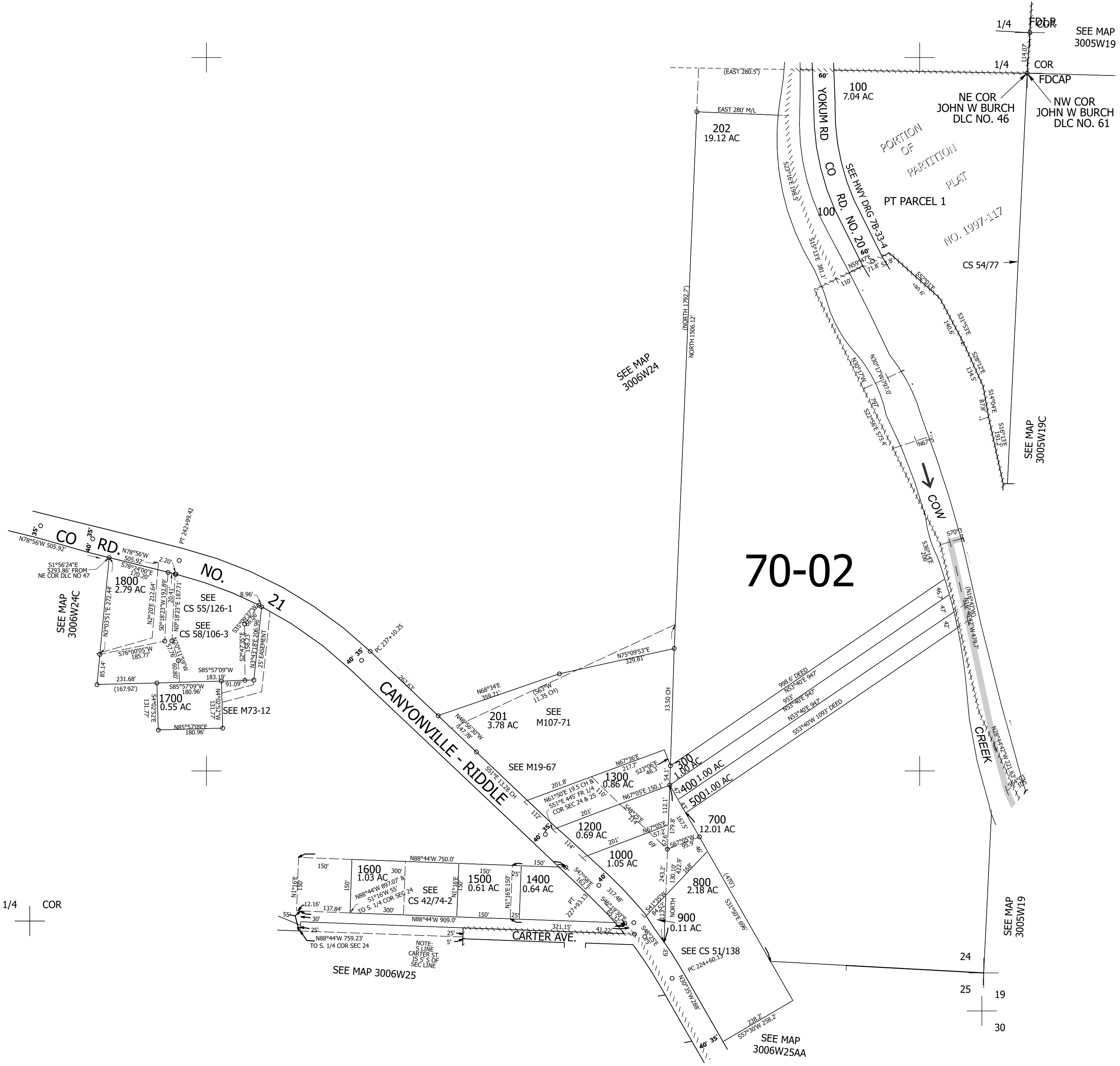
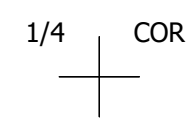
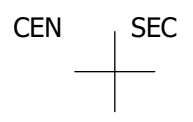
Upper Left:
123°21'32"W 42°56'57"N
4156031E 480466N ft

SE1/4 SEC.24 T.30S. R.06W. W.M.
DOUGLAS COUNTY
1" = 200'

Date Exported 2025-11-18

300624D

CANCELLED NOS:
600 1100 200



70-02

SEE MAP 3005W19

SEE MAP 3005W19C

SEE MAP 3006W24

SEE MAP 3006W24C

SEE MAP 3006W25

SEE MAP 3006W25AA

SEE MAP 3005W19

300624D

Lower Right:
123°20'38"W 42°56'23"N
4159958E 476866N ft