

THIS MAP WAS PREPARED FOR ASSESSMENT PURPOSE ONLY.

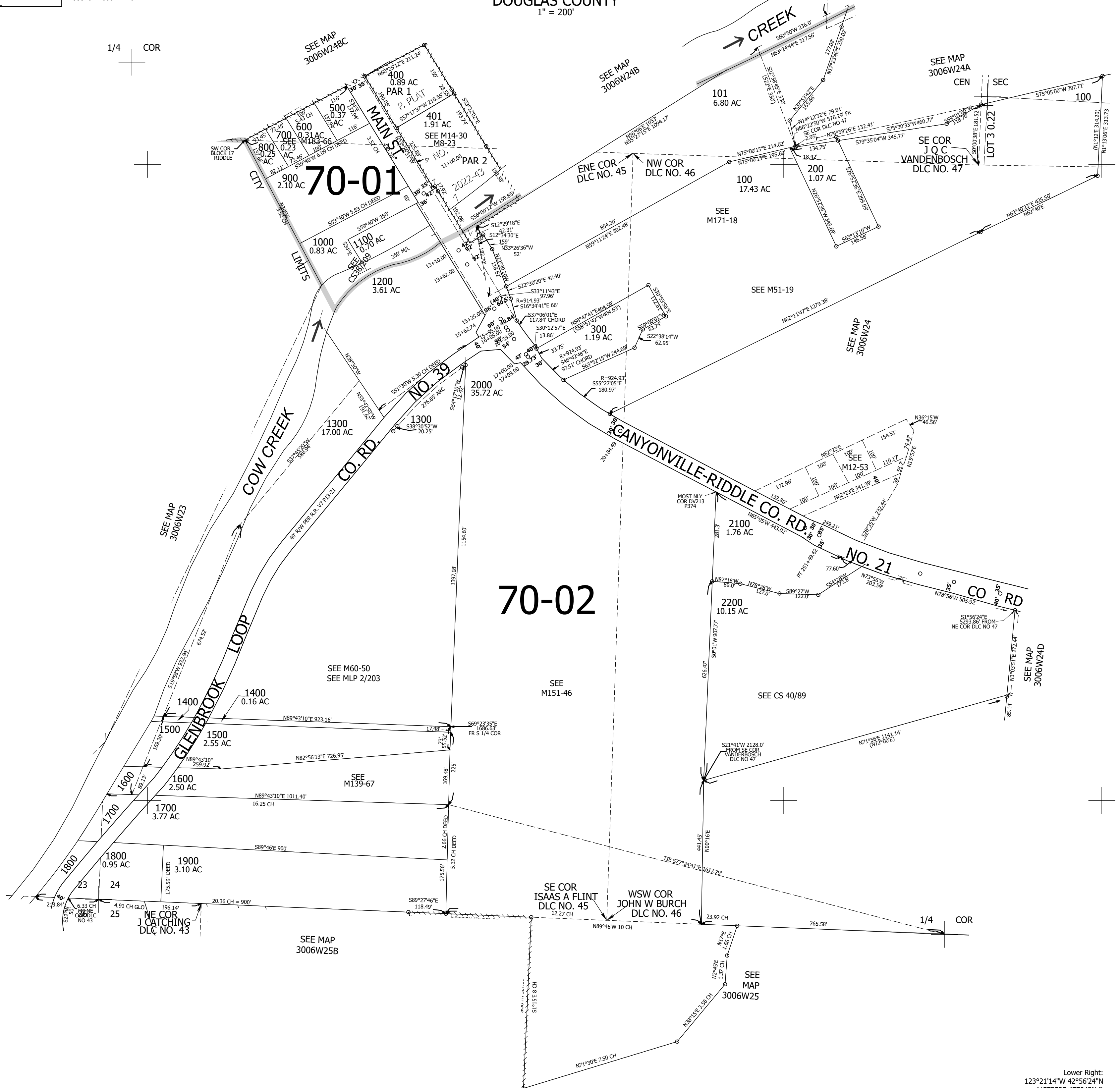
Upper Left:
123°22'9"W 42°56'58"N
4153325E 480642N ft

SW1/4 SEC.24 T.30S. R.06W. W.M.
DOUGLAS COUNTY
1" = 200'

Date Exported 2026-06-09

300624C
Riddle

CANCELLED NOS:
102 201



Lower Right:
123°21'14"W 42°56'24"N
4157252E 477042N ft

300624C
Riddle