

THIS MAP WAS PREPARED FOR ASSESSMENT PURPOSE ONLY.

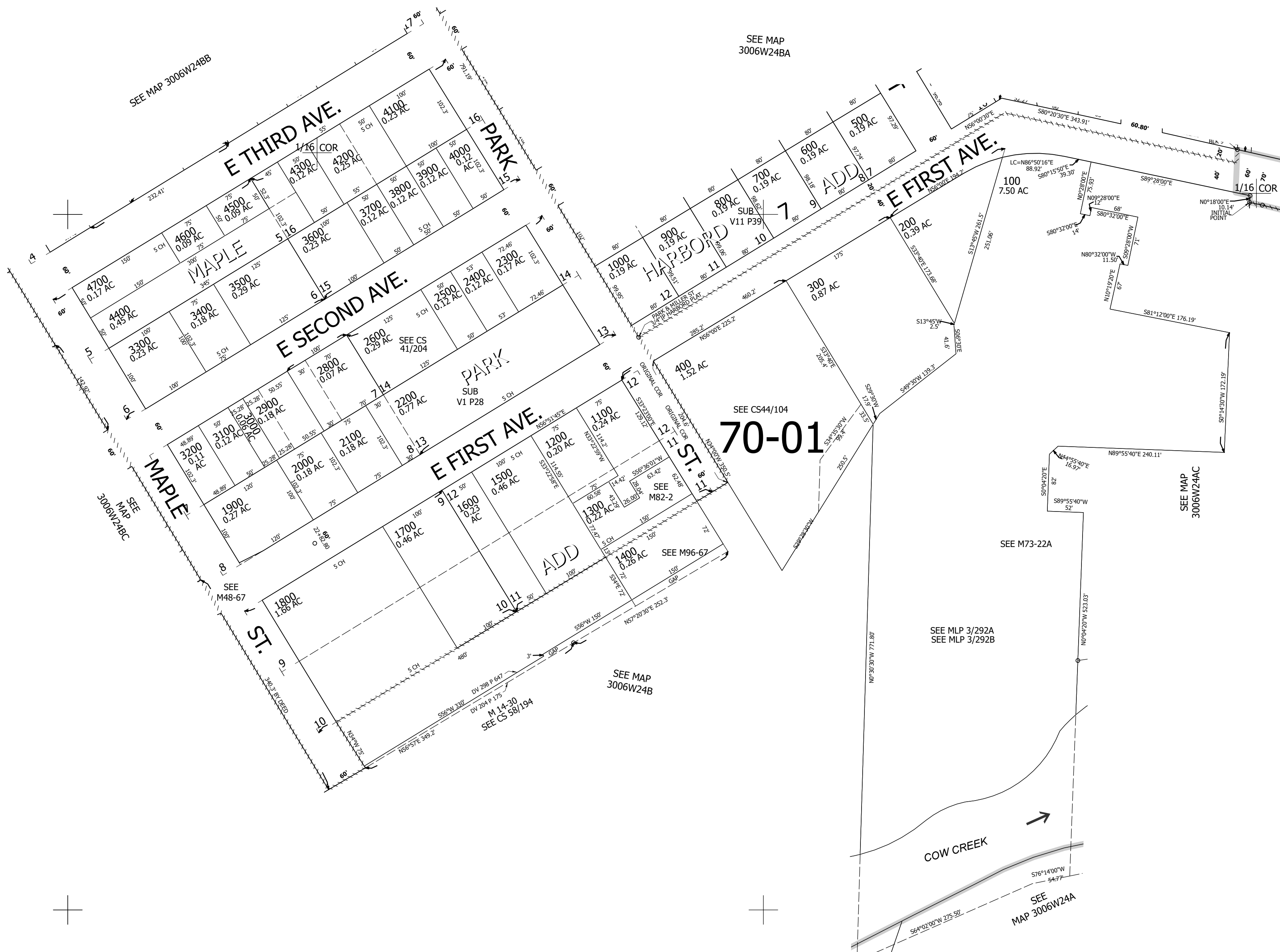
Upper Left:  
123°21'49"W 42°57'12"N  
4154848E 481975N ft

SE1/4 NW1/4 SEC.24 T.30S. R.06W. W.M.  
DOUGLAS COUNTY  
1" = 100'

Date Exported 2024-07-22

300624BD  
Riddle

CANCELLED NOS:  
2700



1/16 COR



300624BD  
Riddle

Lower Right:  
123°21'21"W 42°56'55"N  
4156823E 480236N ft