

THIS MAP WAS PREPARED FOR ASSESSMENT PURPOSE ONLY.

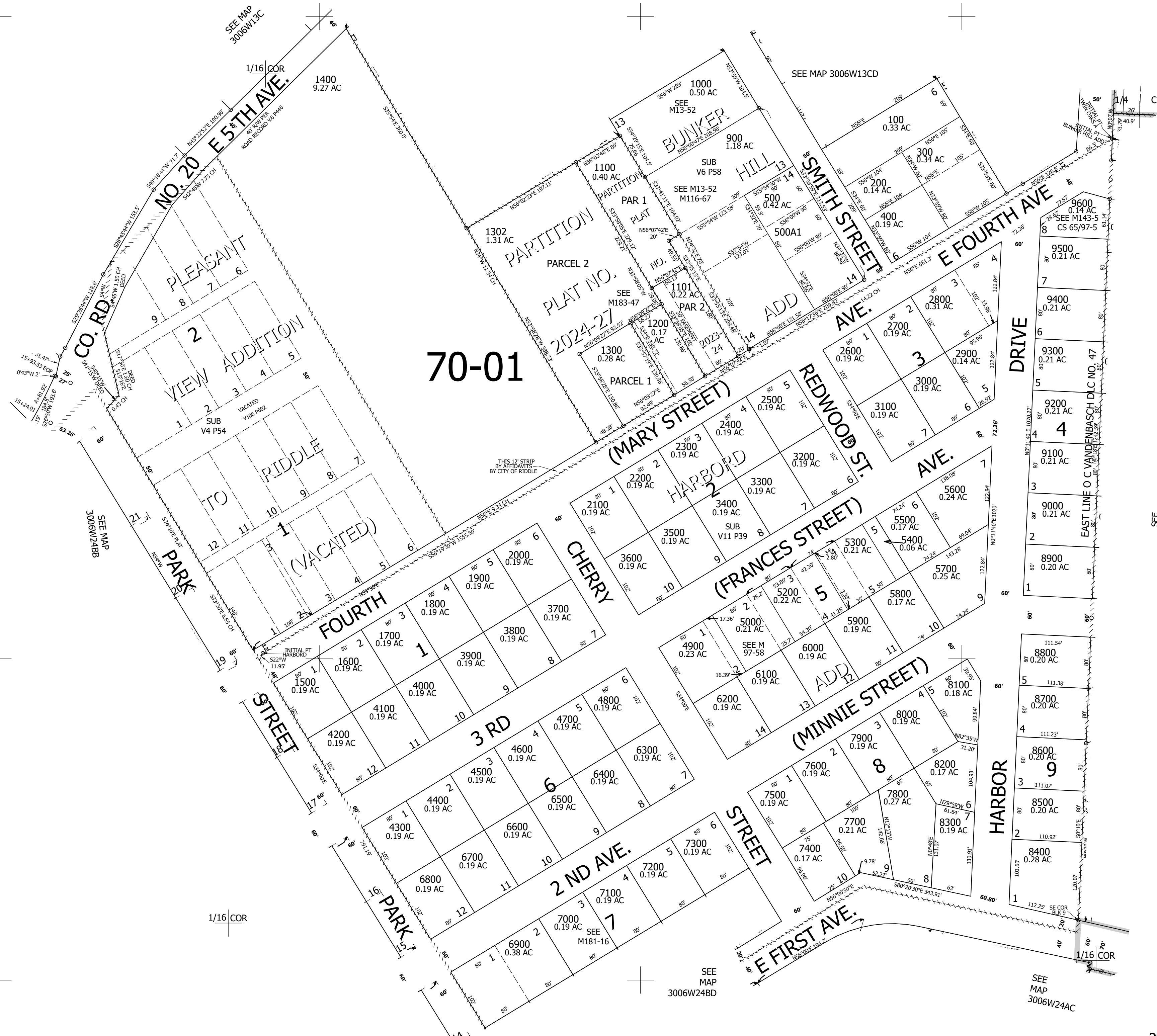
Upper Left:
123°21'48"W 42°57'22"N
4154929E 483075N ft

NE1/4 NW1/4 SEC.24 T.30S. R.06W. W.M.
DOUGLAS COUNTY
1" = 100'

Date Exported 2024-11-01

300624BA
Riddle

CANCELLED NOS:
5101 5100 5001
1102 600 700
800 1201 1301



70-01

SEE MAP
3006W24AB

SEE
MAP
3006W24BD

SEE
MAP
3006W24AC

300624BA
Riddle

Lower Right:
123°21'21"W 42°57'6"N
4156904E 481336N ft