

THIS MAP WAS PREPARED FOR ASSESSMENT PURPOSE ONLY.

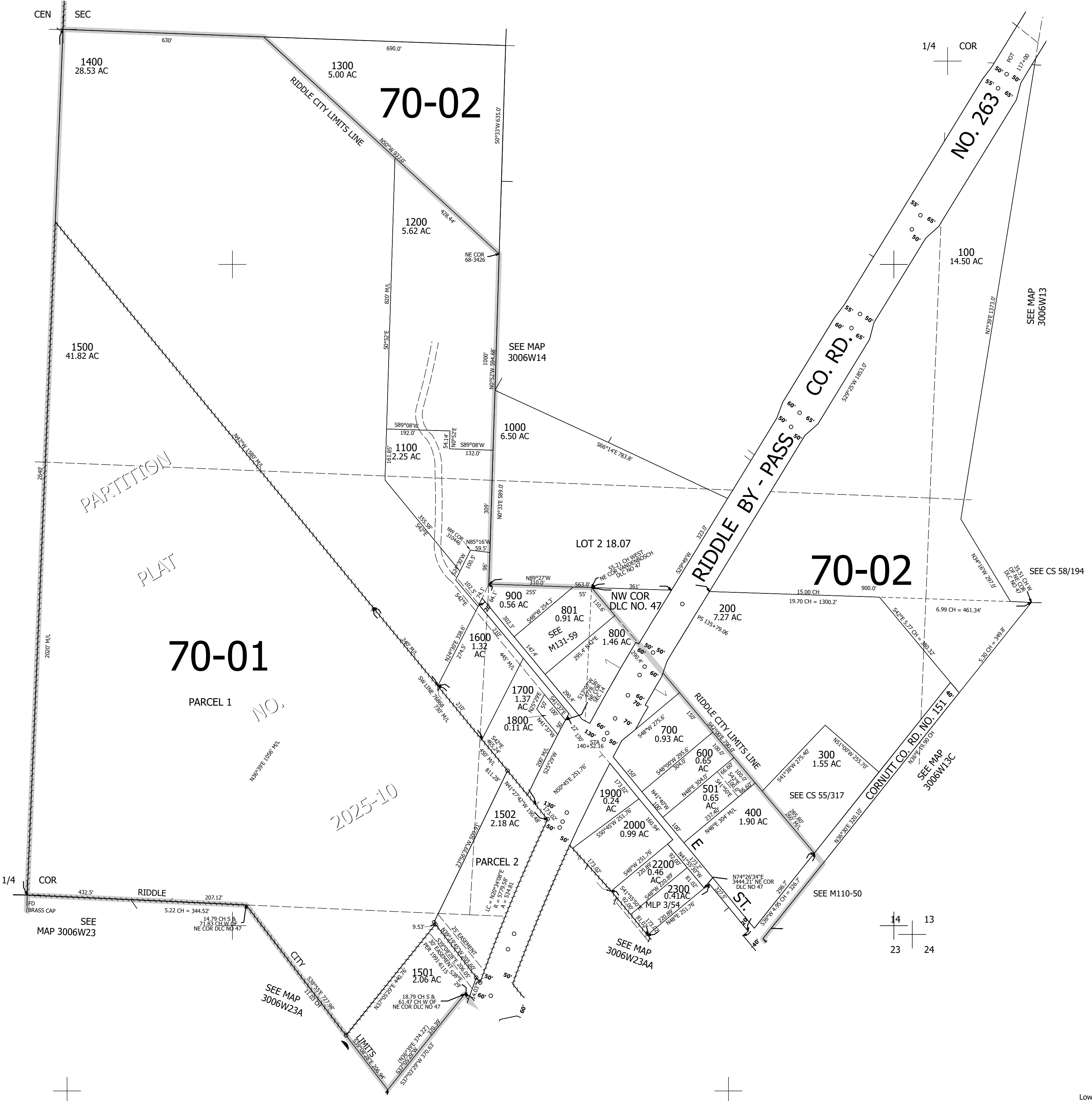
Upper Left:  
123°22'42"W 42°57'49"N  
4151007E 485882N ft

SE1/4 SEC.14 T.30S. R.06W. W.M.  
DOUGLAS COUNTY  
1" = 200'

Date Exported 2025-03-31

300614D  
& INDEX  
Riddle

CANCELLED NOS:  
500 1200



Lower Right:  
123°21'48"W 42°57'16"N  
4154932E 482404N ft

300614D  
& INDEX  
Riddle