

THIS MAP WAS PREPARED FOR ASSESSMENT PURPOSE ONLY.

Upper Left:
123°22'10"W 42°57'50"N
4153361E 485949N ft

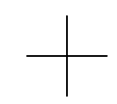
SW1/4 SEC.13 T.30S. R.06W. W.M.
DOUGLAS COUNTY
1" = 200'

Date Exported 2024-04-17

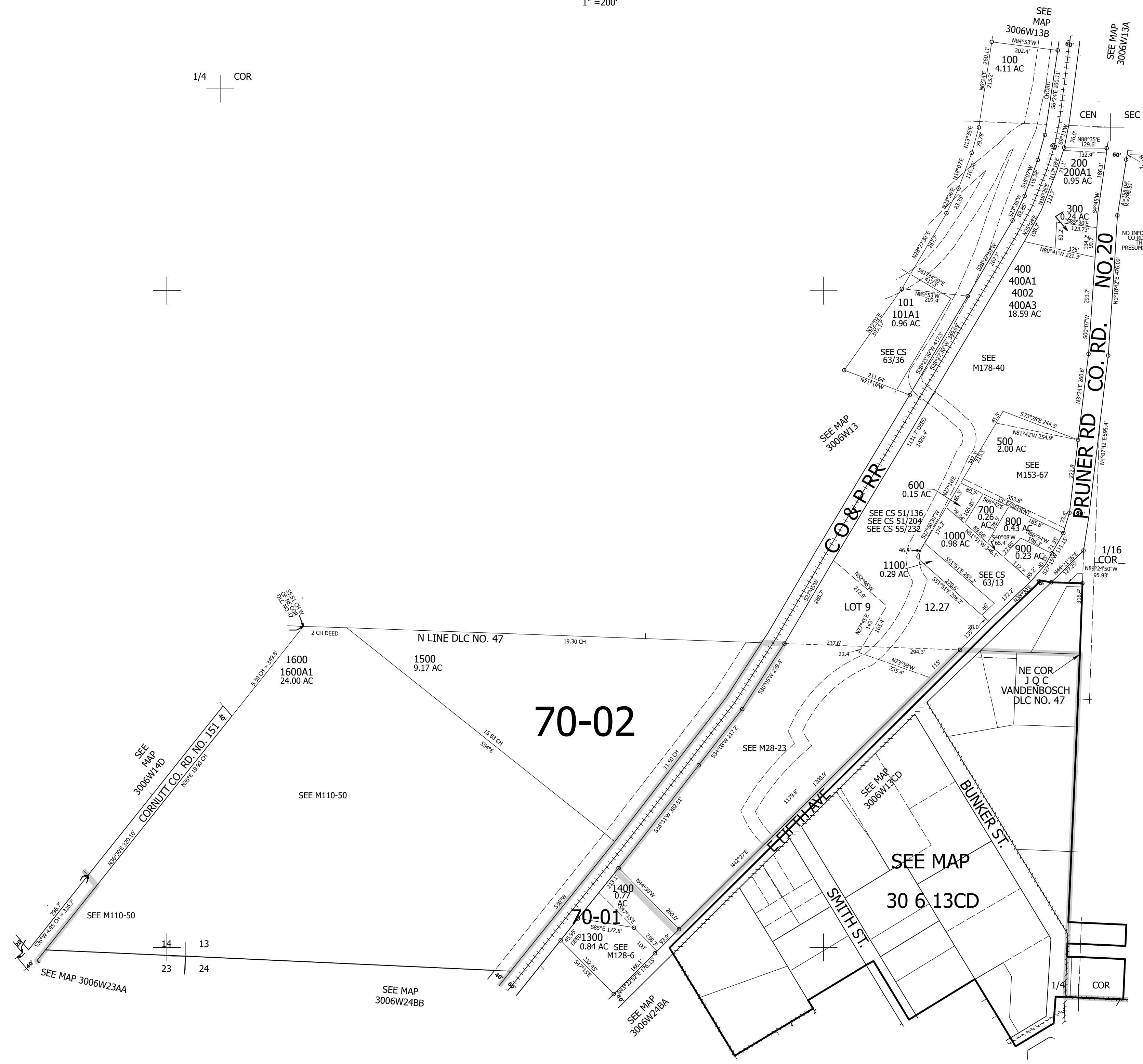
300613C
& INDEX
Riddle

CANCELLED NOS:
1201 1600A2 1200

1/4 COR



NO INFORMATION ON
COR RD WIDTH IN
THIS AREA
PRESUMED TO BE 60'



70-02

70-01

SEE MAP
30 6 13CD

1/4 COR

SEE MAP
3006W14D
CORNUITT CO. RD. NO. 151

PRUNER RD CO. RD. NO. 20

CO & P RR

BUNKER ST.

SMITH ST.

14 13
23 24

SEE MAP
3006W24BB

SEE MAP
3006W24BA

SEE MAP 3006W23AA

Lower Right:
123°21'16"W 42°57'17"N
4157286E 482472N ft

300613C
& INDEX
Riddle