

THIS MAP WAS PREPARED FOR ASSESSMENT PURPOSE ONLY.

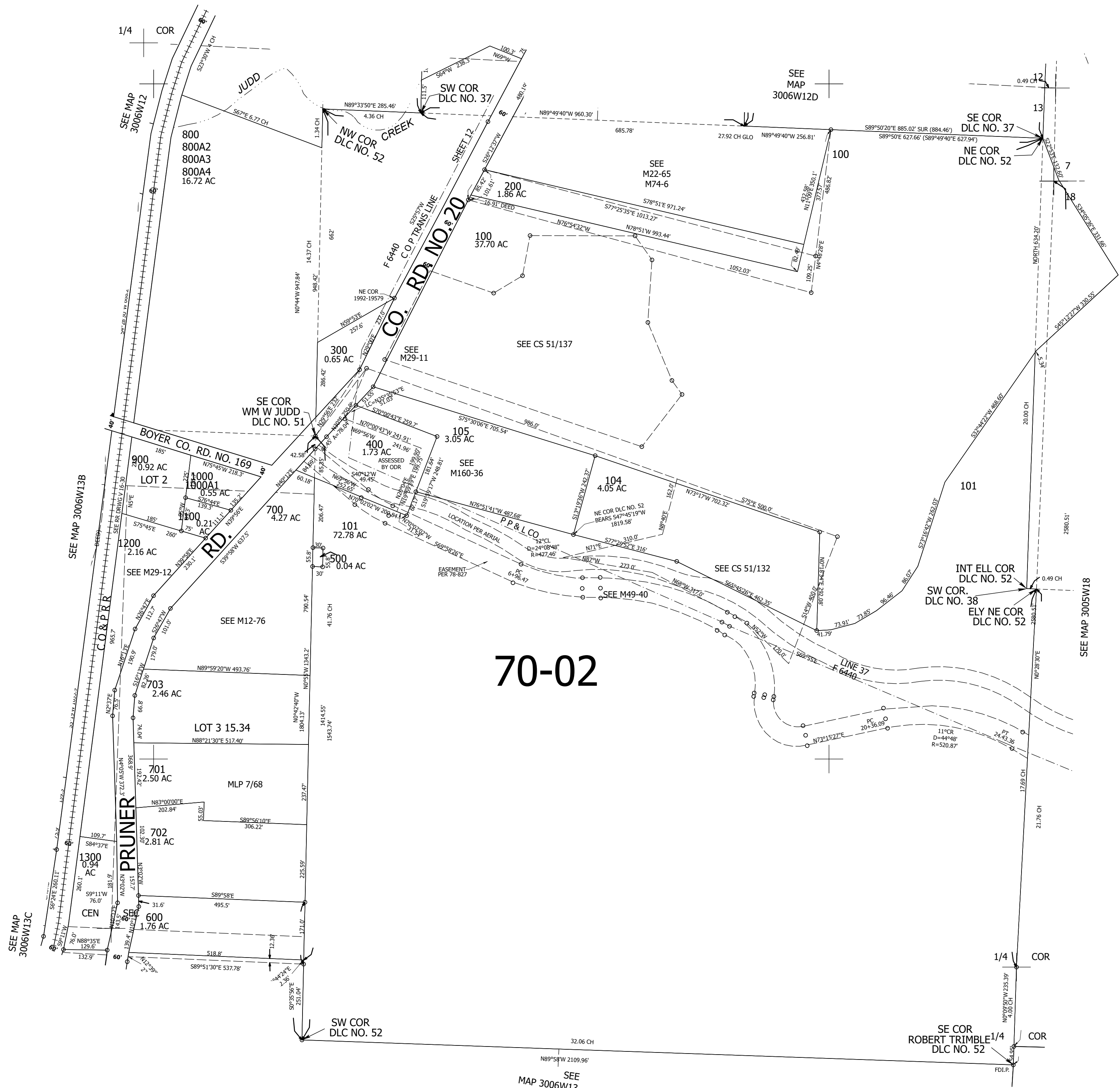
Upper Left:
123°21'32"W 42°58'15"N
4156311E 488373N ft

NE1/4 SEC.13 T.30S. R.06W. W.M.
DOUGLAS COUNTY
1" = 200'

Date Exported 2025-06-16

300613A

CANCELLED NOS:
800A1 102 103
106 100A1



70-02

300613A

Lower Right:
123°20'38"W 42°57'42"N
4160236E 484895N ft