

THIS MAP WAS PREPARED FOR ASSESSMENT PURPOSE ONLY.

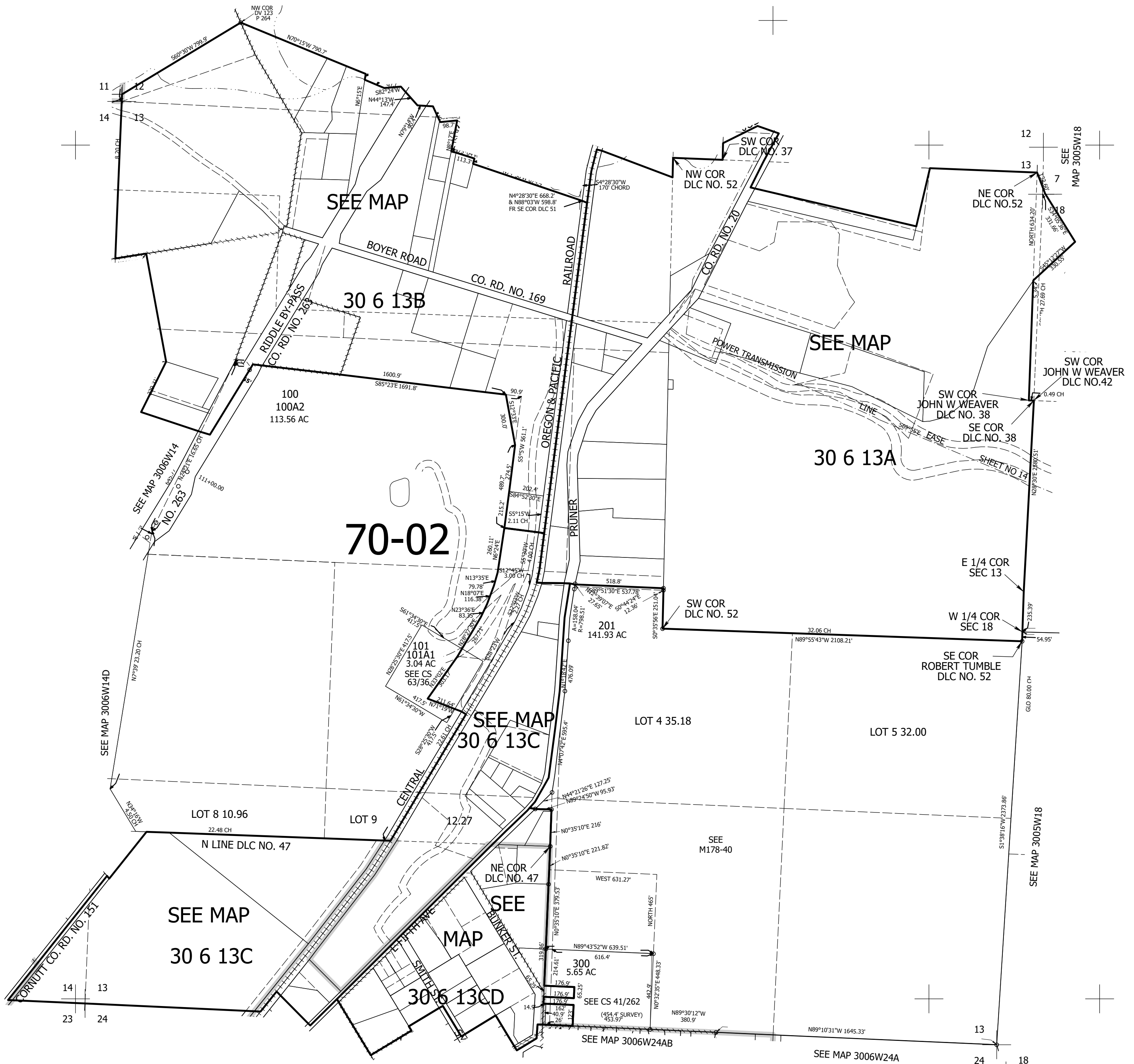
Upper Left:
123°22'17"W 42°58'23"N
4152977E 489228N ft

SEC.13 T.30S. R.06W. W.M.
DOUGLAS COUNTY
1" = 400'

Date Exported 2025-02-25

300613
& INDEX
Riddle

CANCELLED NOS:
202 203 204
100A1 200



300613
& INDEX
Riddle

Lower Right:
123°20'28"W 42°57'16"N
4160827E 482273N ft