

THIS MAP WAS PREPARED FOR ASSESSMENT PURPOSE ONLY.

Upper Left:
123°21'30"W 42°58'37"N
4156547E 490587N ft

SE1/4 SEC.12 T.30S. R.06W. W.M.
DOUGLAS COUNTY
1" = 200'

Date Exported 2025-02-25

300612D

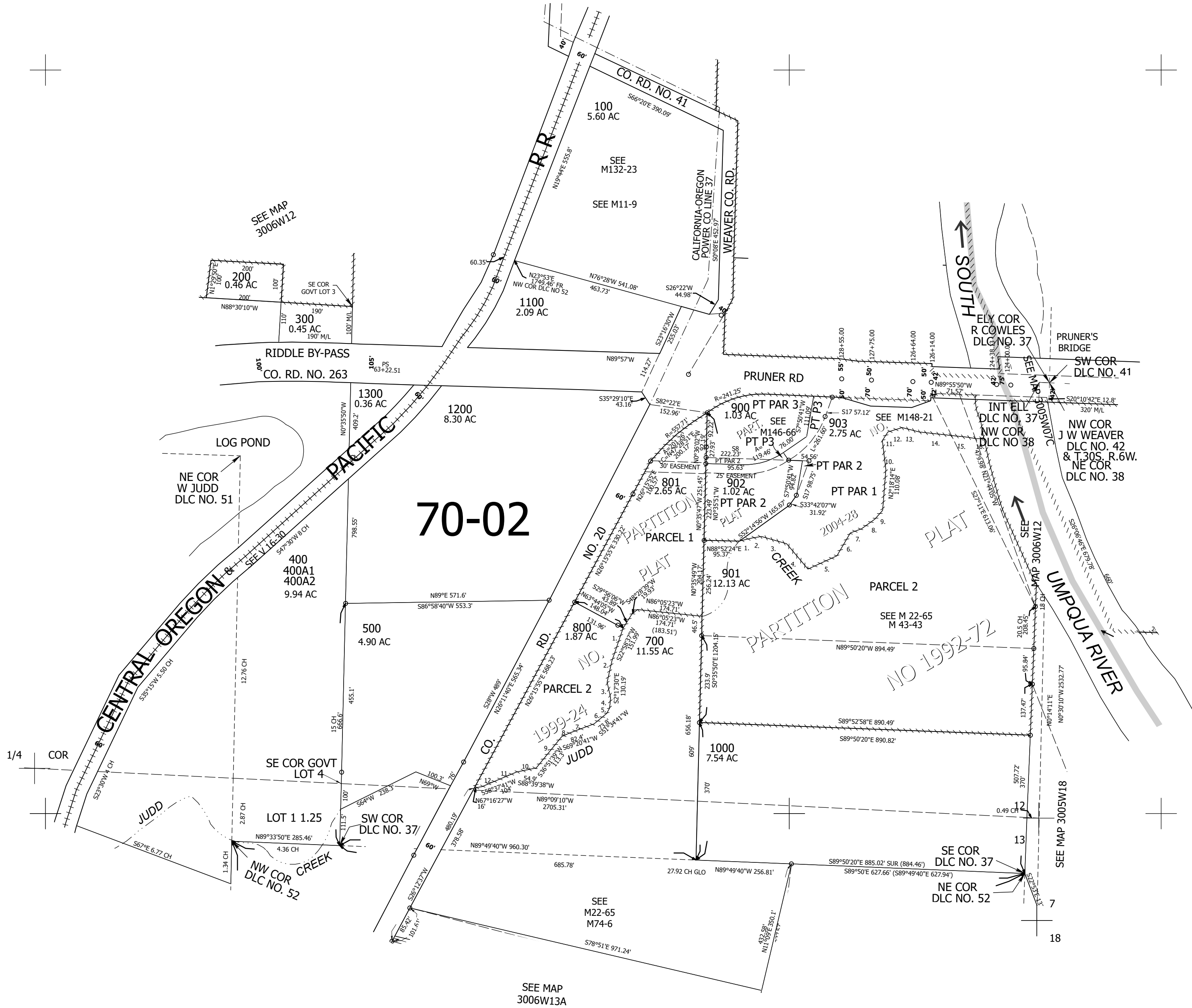
1/4 COR

1/4 COR

CANCELLED NOS:
904 905 906
907 600

- PP 1992-72 & 2004-28
1. N74°38'17"E 35.21'
 2. N78°11'35"E 25.24'
 3. S75°47'45"E 70.3'
 4. S42°15'09"E 89.08'
 5. N63°17'22"E 85.74'
 6. N28°24'56"E 71.24'
 7. N67°41'50"E 31.95'
 8. N52°00'32"E 44.04'
 9. N39°18'34"E 32.03'
 10. N8°52'23"W 78.13'
 11. N30°57'54"E 27.87'
 12. N71°01'42"E 40.06'
 13. S77°41'02"E 47.5'
 14. S85°40'23"E 92.86'
 15. S86°30'18"E 38.12'
 16. S81°09'38"E 20.78'

- PP 1999-24
1. S16°42'15"W 92.87'
 2. S10°46'22"W 58.57'
 3. S14°28'25"E 42.41'
 4. S2°26'23"W 28.4'
 5. S27°22'28"W 17.06'
 6. S48°22'50"W 43.39'
 7. S67°15'04"W 69.8'
 8. S64°00'52"W 23.87'
 9. S37°06'38"W 109.11'
 10. S76°21'30"W 53.31'
 11. S64°59'48"W 101.37'
 12. S78°08'19"W 20.79'



300612D

Lower Right:
123°20'35"W 42°58'4"N
4160472E 487109N ft