

THIS MAP WAS PREPARED FOR ASSESSMENT PURPOSE ONLY.

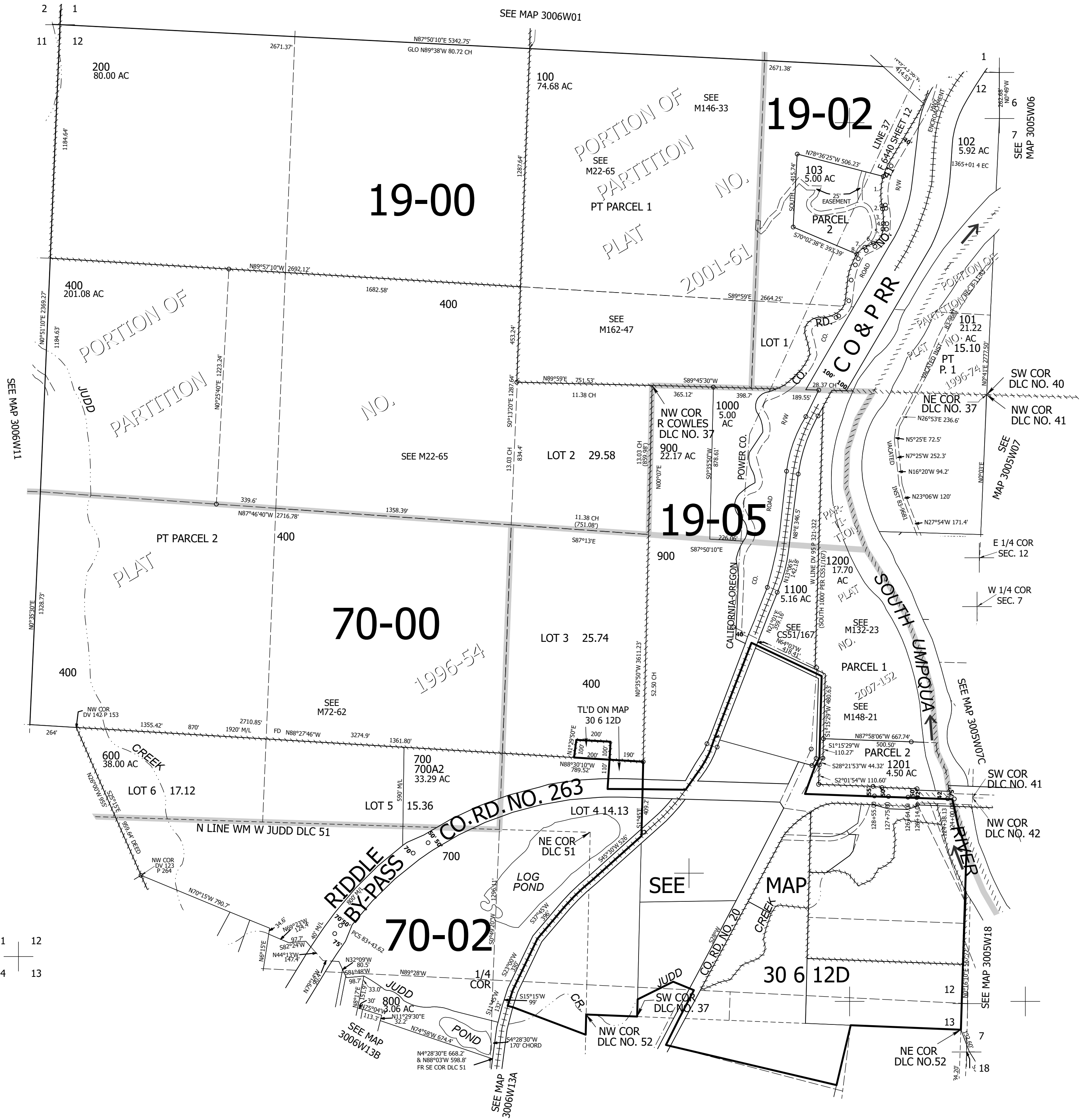
Upper Left:  
123°22'14"W 42°59'10"N  
4153385E 494041N ft

SEC.12 T.30S. R.06W. W.M.  
DOUGLAS COUNTY  
1" = 400'

Date Exported 2025-02-25

CANCELLED NOS:  
300 500 104  
105 700A1 800A1

- PARCEL 103
1. LC=50°21'52"E 167.05'  
R=372.59' A=168.49'
  2. S13°19'09"E 18.04'
  3. LC=56°32'05"E 83.56'  
R=353.67' A=83.76'
  4. S0°15'W 31.4'
  5. LC=S30°48'30"W 97.36'  
R=95.75' A=102.13'
  6. S61°21'60"W 54.71'
  7. LC=S51°13'10"W 40.7'  
R=115.49' A=40.91'
  8. LC=S36°15'14"W 19.4'  
R=115.49' A=19.42'



11 12  
14 13

Lower Right:  
123°20'25"W 42°58'4"N  
4161235E 487086N ft