

THIS MAP WAS PREPARED FOR ASSESSMENT PURPOSE ONLY.

Upper Left:
123°17'15"W 42°55'37"N
4174855E 471719N ft

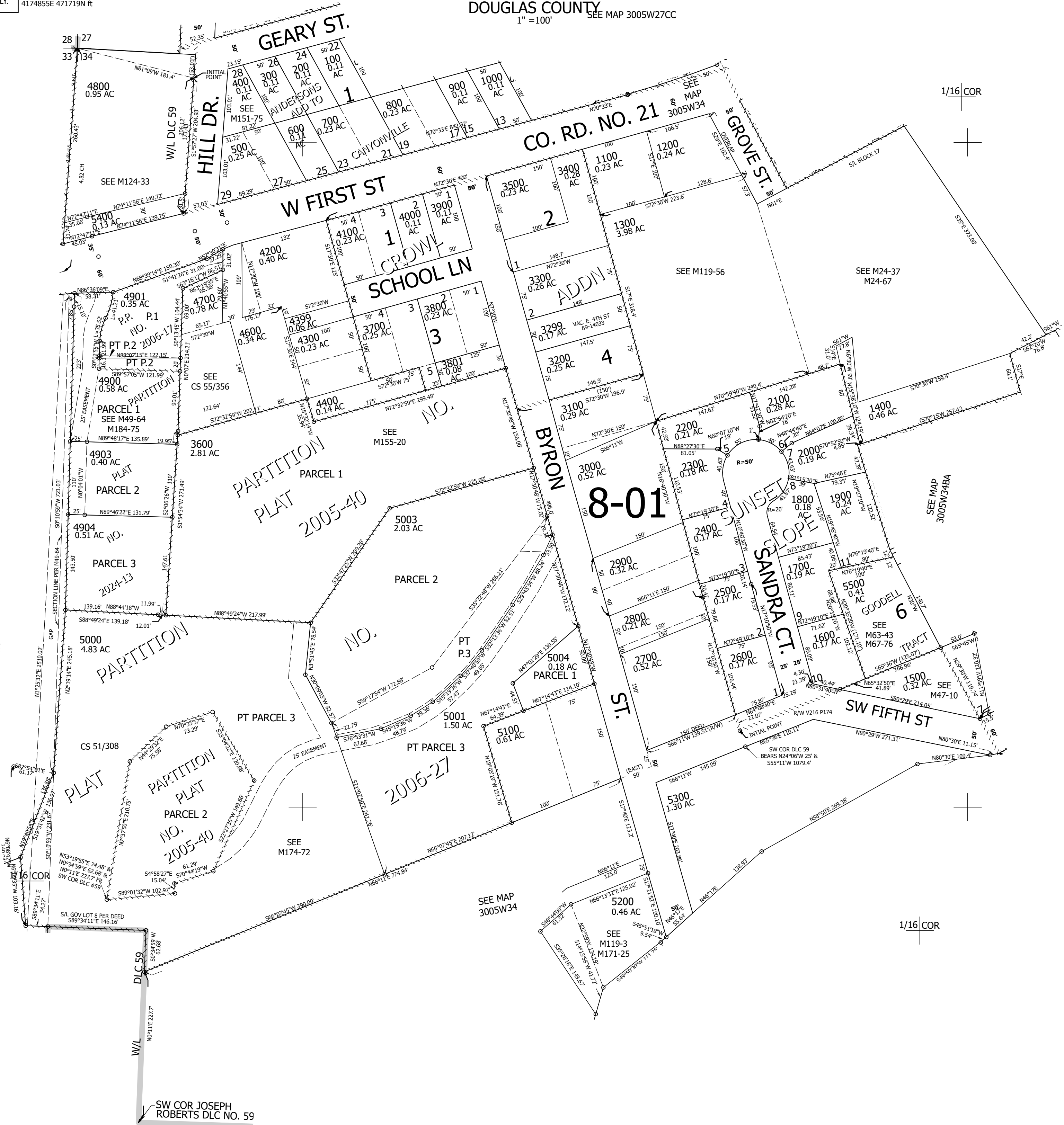
NW1/4 NW1/4 SEC.34 T.30S. R.05W. W.M.
DOUGLAS COUNTY
1" = 100'

Date Exported 2026-01-13

300534BB
Canyonville

CANCELLED NOS:
4101 100M1 200M1
300M1 400M1 500M1
600M1 700M1 800M1
900M1 1000M1 199M1
5002 4500 5005
1300A1 4902 4905
5006

SEE MAP 3005W27CD



SEE MAP 3005W33AA

SEE MAP 3005W33A

SEE MAP 3005W34

SEE MAP 3005W34

1/16 COR

1/16 COR

SW COR JOSEPH ROBERTS DLC NO. 59

300534BB
Canyonville

Lower Right:
123°16'48"W 42°55'21"N
4176832E 469999N ft