

THIS MAP WAS PREPARED FOR ASSESSMENT PURPOSE ONLY.

SW1/4 NE1/4 SEC.34 T30S. R.5W. W.M.  
DOUGLAS COUNTY  
1" = 100'

REVISED ON  
8-28-14

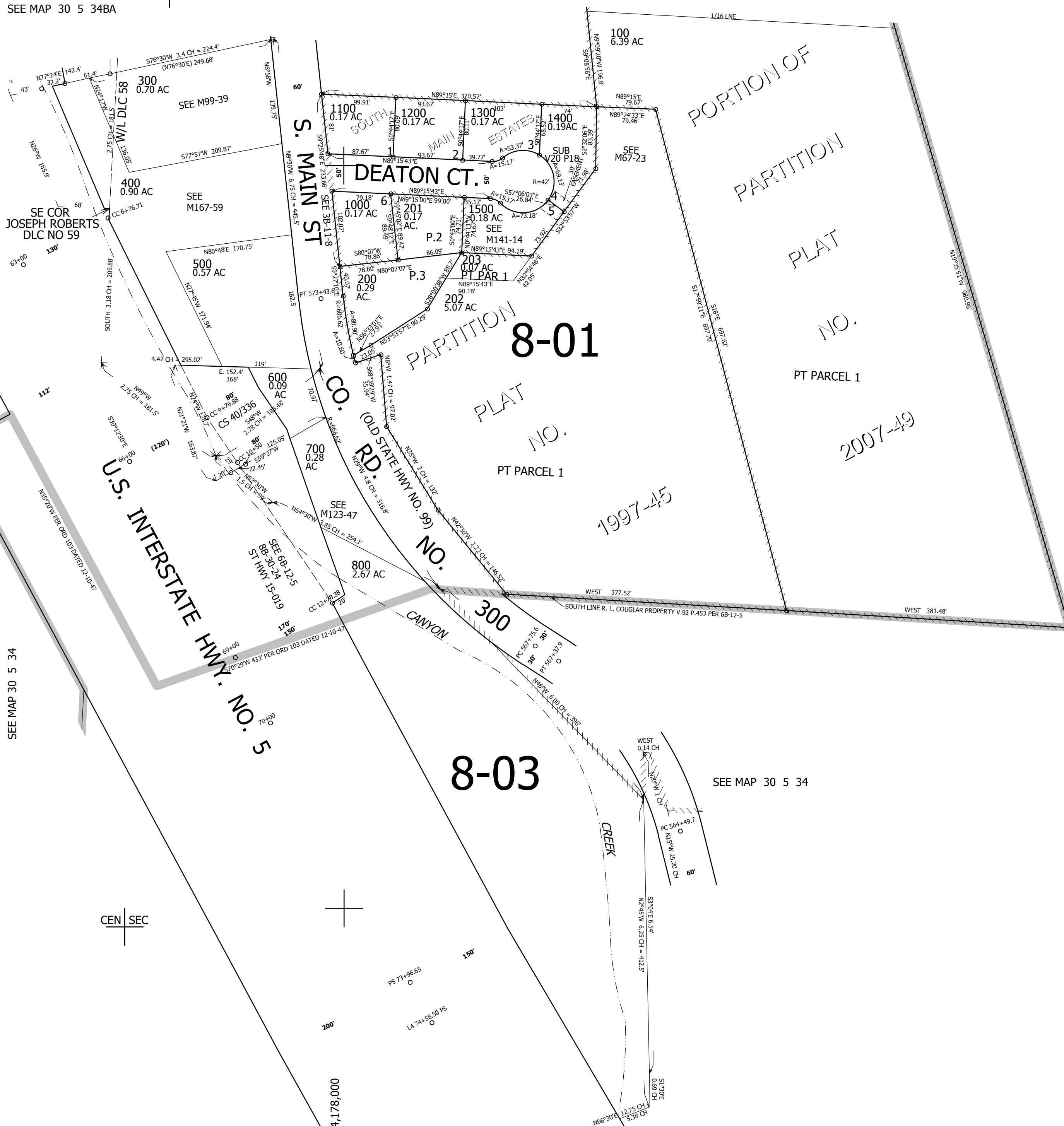
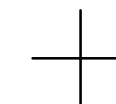
30 5 34AC  
CANYONVILLE

1/16 COR  
SEE MAP 30 5 34BA

SEE MAP 30 5 34AB

1/16 COR

CANCELLED NO'S  
900



SEE MAP 30 5 34

SEE MAP 30 5 34

CEN SEC

469,000

1/16 COR

30 5 34AC  
CANYONVILLE